



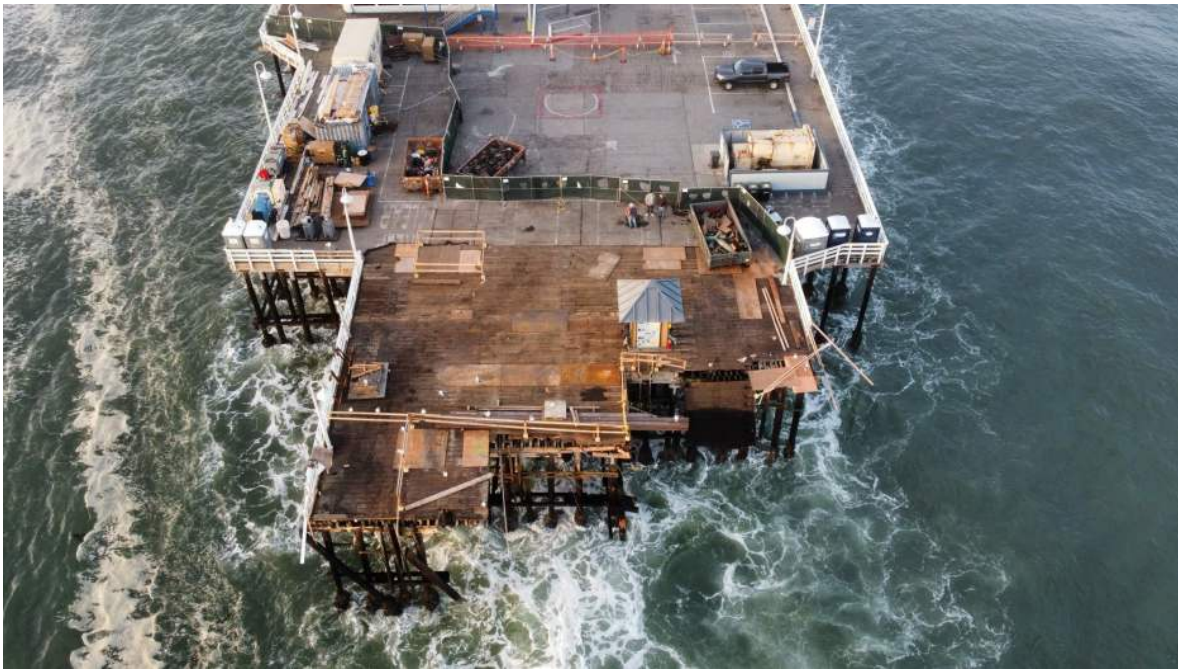
The Nueva Vista Community Resources team distributed \$133,000 over two weeks to residents impacted by the Santa Cruz Wharf collapse. PHOTO: Monica Gutierrez/Community Bridges

Quick, equitable action at the heart of Nueva Vista Community Resources' response

When destructive ocean swells hit the Santa Cruz Wharf and harbor just days before Christmas, they caused more than physical damage—they disrupted livelihoods and upended lives. Thanks to decades of experience and a strong partnership with Community Foundation Santa Cruz County, our team at Nueva Vista Community Resources responded swiftly and equitably.

Drawing on lessons from past disasters—including the CZU Fires, COVID-19, and the devastating 2023 winter storms and floods—we prioritized funds from the Community Foundation's Disaster Fund for those most in need. Between January 8–14, Nueva Vista advocates distributed \$133,000 in \$500 gift cards to 266 wharf workers, including part-time employees and those with multiple jobs. Additionally, 19 low-income harbor liveaboard residents whose boats had become unlivable received support to help in their recovery.

One gift card recipient shared: "This definitely helps with my gasoline and my utilities. I'm really grateful for the support."



The end of the Santa Cruz Municipal Wharf is fenced off Dec. 24, a day after large surf tore off an area under repair. PHOTO: Tom Gigliotti/Courtesy of Santa Cruz Local

A Legacy of Supporting the Community

Since 1983, when Nueva Vista (formerly Familia Center) opened on Leibrandt Avenue, our mission has been to provide the Beach Flats and Lower Ocean communities with a safe, welcoming space to access critical resources. As the only service provider in the neighborhood, Nueva Vista has consistently stepped up in times of disaster.

In the aftermath of earthquakes, floods, and other emergencies, Nueva Vista has been a vital community hub for displaced residents. Our dedicated team has worked tirelessly to ensure families in Beach Flats, Lower Ocean, and surrounding areas receive the resources they need to recover and rebuild.

This work is rooted in the strength of family resource centers. Embedded in communities, these centers deliver family-centered, culturally sensitive services focused on preventing child abuse and neglect, strengthening families, and helping communities thrive.

Nueva Vista is part of the Community Bridges Family Resource Collective (FRC), which includes La Manzana Community Resources (Watsonville-Pajaro Valley-South County), Live Oak Community Resources (Live Oak-Mid-County), and Mountain Community Resources (Felton-North County). Together, the FRCs serve more than 12,000 residents annually, most of whom live at or below the poverty line. Whether facing the COVID-19 pandemic, wildfires, economic crises, or unpredictable attacks on human rights, the FRCs provide stability, hope, and life-saving support.

When destructive ocean swells displaced hundreds of workers for 12 days, Nueva Vista carried forward its decades-long commitment to the community.

Advocate Jay Velazquez explained: “Our dedicated team worked around the clock to ensure that every eligible person received support as quickly as possible. We are proud of our ability to move quickly and equitably in the face of a



Nueva Vista Community Resource Advocate Jay Velazquez helps at participant. PHOTO: Monica Gutierrez/Community Bridges

disaster, ensuring that those who needed it most were the first to receive help.”

What’s Next and How You Can Help

While immediate assistance offered a lifeline, many businesses and workers are still recovering from the disaster and its aftermath. With more than 305 applications for relief, funding fell short of meeting the full need. The Santa Cruz City Council recently approved several measures aimed at assisting these businesses and employees, including additional economic assistance that will be administered by the city.

Here’s how you can support recovery efforts and build resilience for future disasters:

- **Donate to an FRC:** In addition to disaster response, our FRCs provide parenting classes, crisis assistance, after-school programs, housing navigation, public benefits enrollment, and mental health services. Support their work by donating at communitybridges.org/donate.
- **Contribute to the Santa Cruz County Disaster Fund:** This fund supports residents impacted by disasters like storms, floods, and wildfires by providing grants to nonprofits leading recovery efforts. Learn more at cfscc.org/funds/disaster-fund.
- **Shop and dine at Wharf businesses:** Help local businesses recover by dining and shopping at the Wharf during “Wharf Wednesdays” from January 22–February 26, 6–8:30 PM. Enjoy free parking, live music, and weekly raffles for \$100 Wharf gift cards. Learn more at cityofsantacruz.com.

Together, we can continue building resilience and ensuring that our community’s most vulnerable members receive the help they need in times of crisis.

LEARN MORE ABOUT NUEVA VISTA



Thank You for Celebrating Positive Parenting Month with Us!

We want to extend our heartfelt thanks to all the families who joined us for the Triple P Family Fairs in Watsonville and Live Oak over the past two weeks! Despite a little rain, the community came together to celebrate Positive Parenting Awareness Month with joy, connection, and meaningful impact.

These events wouldn’t have been possible without the incredible support of our partners, including First 5 Santa Cruz County, Central California Alliance for Health, the Santa Cruz Museum of Art & History,

IN THE NEWS

Key headlines from Community Bridges' Family Resource Collective and challenges impacting local children, parents, and families.

- [Santa Cruz County Office of Education launches resource website *Sus Derechos* for immigrant families](#)
- [Santa Cruz Wharf Reopens With a Ceremony as Residents, Businesses Celebrate](#)
- [How Community Bridges' Family Resource Collective is partnering to break the cycle of evictions](#)

Learn more about our Family Resource Collective Sites

- [La Manzana Community Resources](#)

and the California Civil Rights Department. Together, we created an environment where families could access valuable parenting tips, discover local resources, and enjoy games, snacks, and prizes—all while reinforcing the importance of positive parenting in building strong, resilient families.

Thank you for being part of this celebration and helping make these fairs such a success. Your participation and enthusiasm remind us of the power of community in creating lasting change.

For those who couldn't make it or are looking for more opportunities to connect, don't forget to follow us on social media for updates on upcoming Triple P parenting classes and events. You can also click [HERE](#) to see upcoming classes.

Let's continue supporting parents and caregivers as they nurture the next generation.

- [Live Oak Community Resources](#)
- [Nueva Vista Community Resources](#)
- [Mountain Community Resources](#)



Power not Panic: Know Your Rights

In uncertain times, knowledge is power. That's why Community Bridges is proud to partner with the Santa Cruz County Office of Education, Community Action Board of Santa Cruz County, Inc., and Watsonville Law Center to launch **Sus Derechos**—a vital online resource designed to help immigrant families understand their rights and access critical support.

Spanish for "Your Rights," **Sus Derechos** (susderechos.info) is a one-stop hub for community members in Santa Cruz, Monterey, and San Benito counties. The site offers **legal resources, know-your-rights materials, and connections to trusted agencies** that provide assistance. It also features **printable red cards** outlining Fourth and Fifth Amendment rights when interacting with immigration authorities, as well as a **Child Care Safety Plan** to ensure families are prepared in case of an emergency.

If you or someone you know needs help navigating these resources, **our Family Resource Centers are here to help**. Visit us in Watsonville, Live Oak, Santa Cruz, or San Lorenzo Valley for guidance and support.

Together, we stand for dignity, safety, and the rights of our community.

VISIT [SUSDERECHOS.INFO](https://susderechos.info)

Empowering Youth Through the Aztecas Program

Housed within La Manzana Community Resources in downtown Watsonville, the Aztecas Program is far more than a sports initiative—it's a holistic youth development program that inspires personal growth, academic success, and community engagement. Supported by Santa Cruz County's Probation Department and Community Bridges, Aztecas offers mentorship, life skills, and teamwork to help young people thrive in all aspects of their lives.



Participants in the Aztecas Program gain access to opportunities that nurture their physical, emotional, and academic development, all while finding a supportive community that champions their potential. Through this program, young people are empowered to strive for long-term success, both on and off the field.

You can make a meaningful difference by volunteering as a tutor or mentor. Your support helps these young athletes achieve their goals and build brighter futures.

Learn more about the Aztecas Program at communitybridges.org/lmcr, and sign up to volunteer at communitybridges.org/volunteer.

LEARN MORE



Help Your Community: Join the FRC Team!

Community Bridges envisions a thriving community where everyone can unleash their full potential.

Our Family Resource Collective team works collaboratively with community partners, residents, businesses, foundations, donors, supporters, volunteers, and the Community Bridges family of programs to provide our participants with access to resources that offer stability and hope for the future.

Here are a few of our current opportunities:

- [Lead Care Manager – Mountain Community Resources](#)
- [Lead Care Manager – Live Oak Community Resources](#)
- [Lead Care Manager – Nueva Vista Community Resources](#)
- [Program Coordinator – Nueva Vista Community Resources](#)

If you're ready to make a difference, we encourage you to apply today! You can submit your application online [HERE](#)

or by contacting our Human Resources department via email at recruitments@cbridges.org. We're also available in person at 519 Main Street, Watsonville CA 95076, or over the phone at 831-688-8840 ext. 200.

Join us at Community Bridges Family Resource Collective.
Your career awaits!

APPLY TODAY



Show your support of Community Bridges and the Family Resource Collective by shopping at our TeePublic storefront! A portion of the proceeds of every sale go toward Community Bridges and the FRC!

BUY COMMUNITY
BRIDGES MERCH



The generosity of our community is what drives the FRC's life-changing work and ensures we can continue to serve more than 12,000 of our friends, family, and neighbors in need each year. Every donation makes a difference.

DONATE: SUPPORT
OUR WORK



The FRC's work would not be possible without our dedicated volunteers. From helping with food distributions to conducting community outreach, our FRC centers have a plethora of volunteer opportunities.

HELP YOUR
COMMUNITY



Our Contact Information

{{Organization Name}}
{{Organization Address}}
{{Organization Phone}}
{{Organization Website}}

{{Unsubscribe}}