



COMMUNITY BRIDGES  
PUENTES DE LA COMUNIDAD

# 2023 Annual Report



**LIFT LINE**



Meals on Wheels  
FOR OLDER ADULTS



# CEO Letter

---

## Dear Community Bridges Supporters,

Facing the challenges of the past 12 months without the help of the Santa Cruz County community would have been a near-impossible task. Thankfully, your support has helped Community Bridges continue our essential services for families and individuals, and to quickly and equitably respond during times of crisis. As local government investment has steadily continued to wane, your generosity has ensured that our 21,000 participants can continue to receive the resources and services they need to thrive.

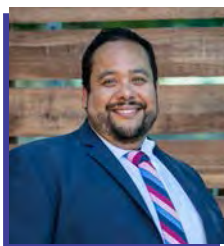
As we enter our 47th year of service, we remain extremely humbled by your willingness to help step up and support your neighbors. We will continue to need that generosity to continue to meet the mounting needs in the Pajaro Valley and San Lorenzo Valley, as well as meet the growing demand for our services in the coming year. Winter and spring storms flooded and destroyed hundreds of homes, and displaced thousands of residents. Much like at the start of the COVID-19 Pandemic and the CZU Fires, demand for Family Resource Collective services like mental health counseling, case management, and advocacy have skyrocketed in the wake of this year's storms and the cascading effect they have on our communities.

In a matter of four months, Community Bridges has provided more than \$1 million in direct assistance to storm-impacted residents, including more than \$800,000 in financial assistance to Pajaro residents alone. We will continue to respond to these tragedies because of your support.

Unfortunately, we know that the need for assistance and support is so much greater than what we have provided to this point or can provide with existing support. We also know that continued economic inflationary pressures will have a significant impact on our supporters' ability to help. Like everyone else, it's costing Community Bridges more to serve the current demand, and we continue to see a nationwide trend of slight reductions in giving regardless of the critical mission we have. That is why we hope that you continue to join us and consider a stretch goal of giving this year to ensure that we can continue to expand our mission.

We will continue to be creative in the ways we serve our community, and offer opportunities for you to deepen your relationship and support of our collaborative work. Volunteerism is a key form of increasing our local impact, and we have many opportunities for you to do that. Your support can also take the form of spending some time advocating for the valuable resources we need to ensure we can meet the needs of our community.

Thank you again for continuing to be a Community Bridges supporter.



In Community,

A handwritten signature in black ink, which appears to be "Ray" followed by a stylized surname.

Raymon "Ray" Cancino  
Chief Executive Officer

# Board & Executive Team

## Leadership Team



**Raymon "Ray" Cancino**  
Chief Executive Officer



**Douglas Underhill**  
Chief Finance Officer



**Tyler Smith**  
Human Resources  
Director



**Seth McGibben**  
Chief Administrative  
Officer



**Erika Rodriguez**  
Senior Program Manager,  
Child & Adult Care Food  
Program



**Lisa Hindman Holbert**  
Program Director, Early  
Education Division



**Dana Wagner**  
Program Director,  
WIC



**Mayra Melendrez**  
Program Director,  
Family Resource  
Collective



**Lois Sones**  
Program Director,  
Elderday



**Lisa Berkowitz**  
Program Director,  
Meals on Wheels for  
Santa Cruz County

Not Pictured

**Jesus Bojorquez**  
Program Director,  
Lift Line

**Tony Nuñez**  
Marketing &  
Communications  
Manager

## Board



**Jack Jacobson**  
Board Chair



**Silvia Morales**  
Vice Chair



**Sara Siegel**  
Secretary



**Steven McKay**



**Michael Babich**



**Brenda Griffin**



**Stephanie Ruhl**



**Mary McMillan**



**Nick Caluaquib**

Not Pictured

**Ryan Friedrich**  
Treasurer



# 2023 Accomplishments



**LIFT LINE**



**235,675**

Senior Meals Served



**90,400**

Bags of Food Distributed



**42,600**

Door-to-Door Rides



**24,700**

Days of Elder & Child Care



**21,224 Served**



**10 Programs**



**20 Sites**

**7,354 hours**

of Crisis Assistance

**2,200 hours**

of English Classes

**2,130 hours**

of Youth Activities

**1,000 hours**

of Counseling



**116%** increase in  
**youth activities**

**52%** increase in  
**demand for rides**

**30%** increase in  
**counseling services**

**24%** increase in  
**families served**

**13%** increase in  
**seniors served**



# Financials

## Statement of Activities for Year Ended June 30, 2022

Support and Revenue	
Government Grants	\$13,330,574
Service Fees	\$1,134,778
Individual and Business Contributions	\$1,161,153
Foundation and other Institutional Grants	\$1,181,911
Interest and other	(\$23,115)
Total	\$16,785,301
Expenses	
Child & Adult Care Food Program <sup>1</sup>	\$3,434,000
Women, Infants & Children (WIC) <sup>2</sup>	\$1,951,684
Child Development Division	\$1,755,706
Meals on Wheels	\$1,922,497
Lift Line	\$1,720,882
Elderday Adult Day Health Care	\$1,298,739
La Manzana Community Resources	\$1,162,712
Mountain Community Resources	\$473,599
Nueva Vista Community Resources	\$379,638
Live Oak Community Resources	\$350,232
Management General & Other	\$2,237,599
Fund Development	\$322,767
Total	\$17,010,055
Excess/(Decrease) of Support over Expenses	(\$224,754)
Increase in Grant Funded Assets	\$1,293,956
Depreciation	(\$346,562)
Increase/(Decrease) in Net Assets	\$722,640
Net Assets, Beginning of Year	\$8,872,805
Net Assets, End of Year	\$9,595,445

## Statement of Financial Position at June 30, 2022

Assets	
Cash and Cash Equivalents	\$4,504,272
Investments	\$1,022,457
Grant Receivables	\$2,128,853
Other Receivables	\$931,988
Inventories	\$22,493
Prepaid Expenses	\$229,027
Deposits	\$128,664
Property and Equipment, net	\$9,891,125
Total Assets	\$18,858,879
Liabilities	
Accounts Payable and Accrued Expenses	\$1,248,551
Salaries and Benefits Payable	\$876,627
Refundable Advances	\$966,843
Notes Payable	\$5,378,083
Reserve Fund	\$793,330
Total Liabilities	\$9,263,434
Donor Unrestricted Net Assets	\$9,149,698
Donor Restricted Net Assets	\$445,747
Total Net Assets	\$9,595,445
Total Liabilities and Net Assets	\$18,858,879

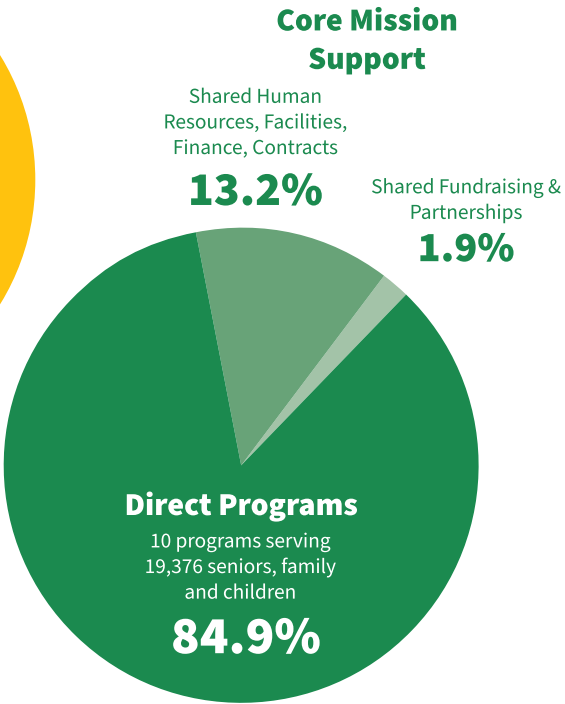
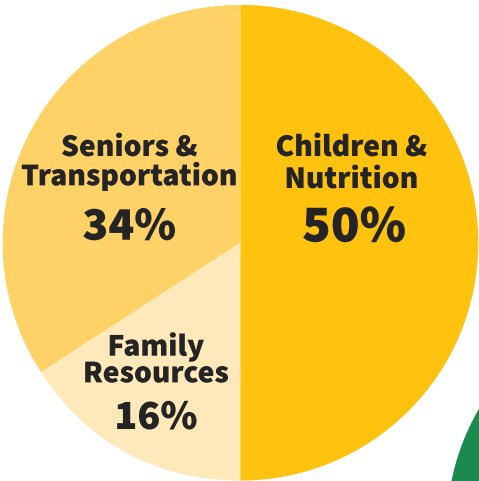
<sup>1</sup> Includes \$3,083,530 distributed directly to day care home meal sites.

<sup>2</sup> These audited statements do not include the value of the WIC food vouchers. In 2022, WIC distributed 76,170 voucher packages with the total value of \$2,218,832.

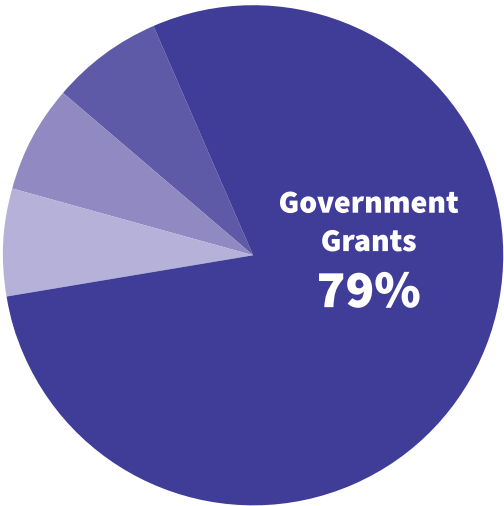
These numbers reflect our 2021/22 financial statements as audited by Kaku & Mersino, LLP. For a complete financial report, please contact us at (831) 688-8840 or visit [communitybridges.org/financials](https://communitybridges.org/financials).

# Your Impact

## Operating Expenses



## Operating Revenue





519 Main St, Watsonville, CA 95076

831-688-8840 | [info@cbridges.org](mailto:info@cbridges.org)

[communitybridges.org](http://communitybridges.org) [🐦](#) [f](#) [@](#)

Non-Profit Org  
U.S. Postage  
PAID  
Watsonville, CA  
Permit No. 36



Thanks to you we can provide services to over 20,000 children, families and seniors. This year, make an impact by supporting our programs at [communitybridges.org/donate](http://communitybridges.org/donate).

