



COMMUNITY BRIDGES
PUENTES DE LA COMUNIDAD

2022 Annual Report



LIFT LINE



CEO Letter

Dear Community Bridges Friends and Supporters,

Santa Cruz County has been there for Community Bridges since the very beginning – more than 45 years. Since then we’ve grown to add new services which have allowed us to reach more families and individuals. We’ve pivoted to respond to every crisis our community has faced since 1977.

Supporters like you make that possible. We’re asking you to be there for us again as we reimagine the best ways to meet Santa Cruz County’s needs. Demand for Family Resource Center services like mental health counseling, case management and advocacy have increased by 500% since the start of the pandemic. Community Bridges has given out more than \$1 million in direct assistance and more than a half-million pounds of food assistance.

We know next year will be a little harder to meet the needs of the community. Signs of tightened budgets at home due to the economic pressures of inflation have similar impacts on programs and services hurt by rising costs and divestment of local government support. Like everyone else, it’s costing Community Bridges more to serve the current demand, and people seem less able to meet the call for support.

We are going to continue to be creative in the ways we serve our clients, but a few hours of your volunteer time each week would make it possible to serve even more members of our community than we could doing it alone. We are also extremely grateful to those who may not have the time to volunteer but might be able to offer their support through their advocacy or donation.



Thank you for continuing to be a Community Bridge supporter.

In Community,

A handwritten signature in black ink, appearing to read "Ray", written over a light blue background.

Raymon “Ray” Cancino
Chief Executive Officer

Board & Executive Team

Leadership Team



**Raymon "Ray"
Cancino**
Chief Executive Officer



Douglas Underhill
Chief Finance Officer



Tyler Smith
Human Resources
Director



Seth McGibben
Chief Administrative
Officer



Jayme Ackemann
Marketing & Social
Media Manager



Lisa Hindman Holbert
Program Director, Early
Education Division



Dana Wagner
Program Director,
WIC



Lois Sones
Program Director,
Elderday



Lisa Berkowitz
Program Director,
Meals on Wheels for
Santa Cruz County

Erika Rodriguez
Senior Program
Manager, Child & Adult
Care Food Program

Not Pictured

Mayra Melendrez
Program Director,
Family Resource
Collective

Jesus Bojorquez
Program Director,
Lift Line

Board



Jack Jacobson
Board Chair



Sara Siegel
Secretary



Steven McKay



Amy McEntee



Michael Babich



Brenda Griffin

Not Pictured

Silvia Morales
Vice Chair

Stephanie Ruhl

Erich Friedrich
Treasurer

Mary McMillan

2022 Accomplishments



500,000

Pounds of food



28,000

Door-to-door rides



20,000

Children, families and seniors served annually



360,000

Meals delivered



45th Anniversary



10 Programs



20 Sites

\$1,000,000+

in direct rental relief assistance

500% increase

in Family Resource Center requests for personal assistance

6,500 hours

of walk-in advocacy services at Family Resource Centers

900 hours

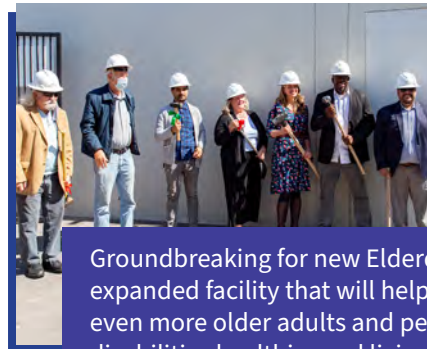
of afterschool tutoring

800 hours

of mental health counseling



Child Development Division is now known as the Early Education Division, reflecting the growing focus on universal prekindergarten and early education in the state of California.



Groundbreaking for new Elderday expanded facility that will help keep even more older adults and people with disabilities healthier and living at home.



Jack Jacobson, Board President and winner of the inaugural Bridge Builder Award for his more than 40 years of service.

Financials

Statement of Activities for Year Ended June 30, 2021

Support and Revenue	
Government Grants	\$13,696,724
Service Fees	\$2,024,692
Individual and Business Contributions	\$1,247,491
Foundation and other Institutional Grants	\$1,522,966
Interest and other	\$363,325
Total	\$18,855,198
Expenses	
Child & Adult Care Food Program ¹	\$3,887,413
Women, Infants & Children (WIC) ²	\$1,897,280
Early Education Division	\$1,692,981
Meals on Wheels	\$1,952,176
Lift Line	\$1,591,519
Elderday Adult Day Health Care	\$1,183,479
La Manzana Community Resources	\$669,939
Mountain Community Resources	\$607,710
Nueva Vista Community Resources	\$347,182
Live Oak Community Resources	\$343,669
Management General & Other	\$2,162,698
Fund Development	\$259,487
Total	\$16,595,531
Excess/(Decrease) of Support over Expenses	\$2,259,667
Increase in Grant Funded Assets	\$845,638
Depreciation	(\$314,474)
Increase/(Decrease) in Net Assets	\$2,790,831
Net Assets, Beginning of Year	\$6,081,974
Net Assets, End of Year	\$8,872,805

Statement of Financial Position at June 30, 2021

Assets	
Cash and Cash Equivalents	\$3,785,150
Investments	\$1,113,743
Grant Receivables	\$1,957,063
Other Receivables	\$846,636
Inventories	\$23,785
Prepaid Expenses	\$239,324
Deposits	\$220,962
Property and Equipment, net	\$7,910,142
Total Assets	\$16,096,805
Liabilities	
Accounts Payable and Accrued Expenses	\$1,137,405
Salaries and Benefits Payable	\$940,672
Refundable Advances	\$291,063
Notes Payable	\$4,311,876
Reserve Fund	\$542,984
Total Liabilities	\$7,224,000
Donor Unrestricted Net Assets	\$8,341,177
Donor Restricted Net Assets	\$531,628
Total Net Assets	\$8,872,805
Total Liabilities and Net Assets	\$16,096,805

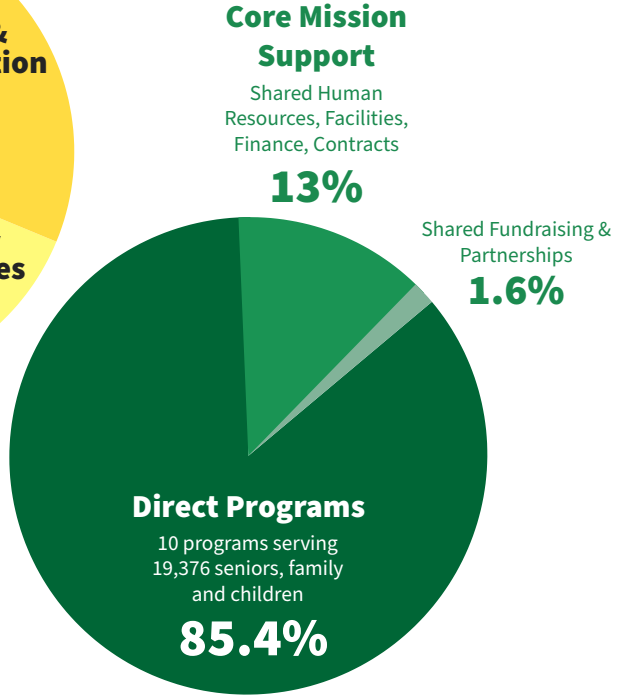
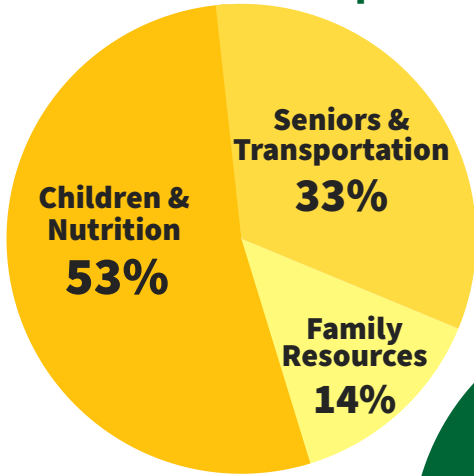
¹ Includes \$3,559,785 distributed directly to day care home meal sites.

² These audited statements do not include the value of the WIC food vouchers. In 2021, WIC distributed 76,170 voucher packages with the total value of \$2,180,757.

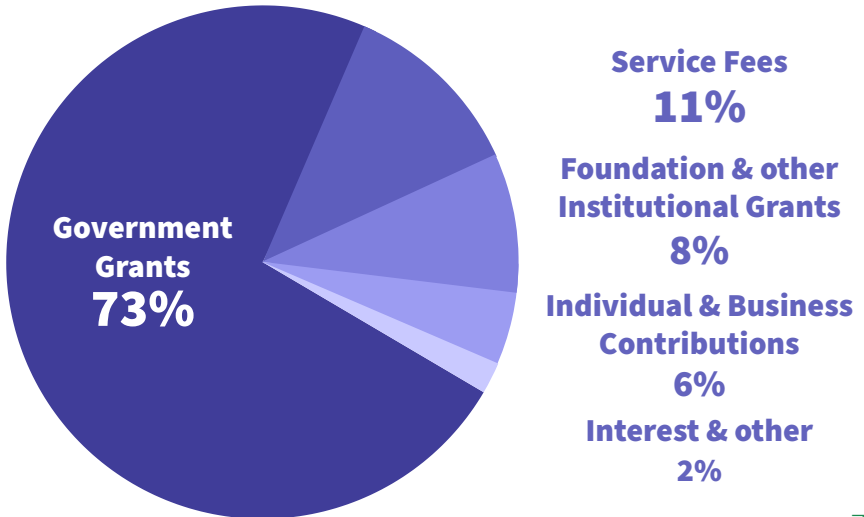
These numbers reflect our 2020/21 financial statements as audited by Kaku & Mersino, LLP. For a complete financial report, please contact us at (831) 688-8840 or visit communitybridges.org/financials.

Your Impact

Operating Expenses



Operating Revenue





Thanks to you we can provide these services to over 20,000 children, families and seniors. This season, make an impact by supporting our programs at communitybridges.org/donate.



COMMUNITY BRIDGES
PUENTES DE LA COMUNIDAD

831-688-8840 | info@cbridges.org | communitybridges.org  