



2019 ANNUAL REPORT

TOGETHER, Anything is Possible



COMMUNITY BRIDGES
PUENTES DE LA COMUNIDAD



TABLE OF CONTENTS

2	Letter from the CEO and Board Chair	10	Leading the Way
3	Our Leadership	11	Building Community
4	2019 Program Accomplishments	12	A Community of Support
6	Child & Nutrition Programs	20	You Can Make a Difference
7	Family Resource Collective	22	Your Impact
8	Senior Programs	23	Five Year Revenue Trends
9	Donor & Volunteer Spotlight	24	Financials

DEAR FRIENDS,

Once again, we would like to thank you for your dedicated commitment to creating a thriving community where every person has the opportunity to unleash their full potential. As a generous donor and supporter, you continue to champion our programs, services and clients who need these vital resources to transform their current circumstances. We also thank you for being an active ally as we advocate for policy and systems changes to improve the agency's access to resources. Your continued partnership is vital in meeting the growing societal demands and improving the lives of those we serve. Your desire to be a true agent of change is an invaluable asset both to this agency and to our community, and we thank you for showing up in so many ways.

In 2019, we worked together to realize the vision of obtaining a permanent location for our Lift Line program, which ensures that our low-income senior neighbors continue to have stable access to medical services through our paratransit transportation services. You also helped fund the growth of our Family Resource Collective counseling program that serves those unable to receive free services due to immigration status, lack of healthcare or lack of funds for copayments. This program makes mental health support accessible to everyone. You also supported the expansion of our Child and Adult Food Care Program (CACFP) that has now grown to serve clients in Monterey and San Benito Counties after another nonprofit service provider closed its doors.

As a result of our many years of mission-based work, Community Bridges was recognized by

Assembly Member Robert Rivas for our achievements and received the 2019 Nonprofit of the Year award. In 2019, we continued our collaboration with local partners to address emerging needs in our community through providing rental protection workshops and trainings. By promoting education and knowledge to our community, we help ensure people remain housed.

Ongoing, we are implementing innovative ways to meet the daily agency demands and the needs of those we serve and the communities we live in. We will continue to do so by:

- **Promoting Wage and Equity** by actively engaging with community members and policy makers to address a growing crisis that is affecting social services.
- **Uplifting Families** by expanding services and partnerships, such as free tenants' rights workshops and digital literacy education.
- **Educating community members and policy makers** on the impact of the projected senior population growth and increased demand for services and advocating for the resources needed to address this issue.

2019 has made us more resilient and stronger to face the challenges ahead. We are committed, equipped and prepared to lead the way to a healthier, equitable and more inclusive community in the next decade.

With gratitude,



Raymon Cancino
Chief Executive Officer



Shannon Brady
Board Chair

OUR LEADERSHIP



BOARD OF DIRECTORS

Shannon Brady
Chair

Pam Fields
Vice Chair

Lee Slaff
Treasurer

Jack Jacobson
Secretary

Kenn Barroga*

Martín Bernal

Stephanie Connor Kent

Katy King

Nicolette Lee

Amy McEntee

Steven McKay

Sara Siegel

Richard Vasquez*

Casey Wu*

**Outgoing*

MANAGEMENT TEAM

Administration

Raymon “Ray” Cancino
Chief Executive Officer

Douglas Underhill
Chief Finance Officer

Julie Gilbertson
Chief Human Resources Officer

Seth McGibben
Chief Administrative Officer

Amy Hanley
Marketing & Communications Manager

Lisa Hindman Holbert
Program Director, Child Development Division

Cathy Cavanaugh,
Program Director, WIC

Lois Sones
Program Director, Elderday

Kirk Ance
Program Director, Lift Line

Lisa Berkowitz
Program Director, Meals on Wheels for Santa Cruz County

Roxanne Moore
Program Director, Family Resource Collective

Programs

Leslie Telles
Program Director, Child and Adult Care Food Program

2019 PROGRAM ACCOMPLISHMENTS



CHILDREN AND NUTRITION PROGRAMS

Child Development Division (CDD)

CDD tackled the pay disparity in early care and education by restructuring salary schedules, implementing career ladders, and increasing teacher salaries based on their education levels so that children receive the highest quality education from valued professionals.

Child and Adult Care Food Program (CACFP)

CACFP expanded its reach and now provides full coverage of services to day care providers in Santa Cruz, Monterey and San Benito counties to ensure that no child goes without access to fresh fruits and vegetables while in the care of licensed providers.

Women, Infants & Children (WIC)

WIC provided healthy supplemental foods to 6,000 low income families each month and offered 2,000 educational opportunities, improving the health of young families in Santa Cruz County. We provided individual lactation peer counseling to 350 breastfeeding clients each month, and onsite lactation support to 80 new moms in their own language.

FAMILY RESOURCE COLLECTIVE

La Manzana Community Resources

LMCR continues to be a vital lifeline to our south county community, providing healthy food access, translation assistance, and help applying for benefits and resources. This year the Renacer support group—the only

Spanish-speaking support group for families of children with disabilities in Santa Cruz County—offered educational workshops, respite childcare, resources and peer support to parents with special needs children.

Live Oak Community Resources

LOCRC hosted the popular 10th annual “futsal” indoor soccer league to bring together Live Oak families and volunteers to develop teamwork, literacy and leadership skills while promoting exercise and nutrition. The center received the 2019 United Way Community Builder Award as New Partnership of the Year for bringing afterschool tutoring and community resources to Emerald Bay Apartments.

Nueva Vista Family Resource Center

Our longtime location on East Cliff Drive got some much needed attention with the help of students and volunteers to repaint the center inside and out, clean up landscaping and improve security at the only family resource center serving the City of Santa Cruz.

Mountain Community Resources

Serving north county, MCR works with individuals and families experiencing homelessness or at risk of becoming homeless. This year our center provided housing navigation and coordination, personal storage lockers, emergency food bags and toiletries, bus passes, mail delivery, computer/internet/printer access, phone charging, health screenings and wellness care, mental health counseling, and assistance with accessing Medi-Cal and CalFresh benefits.

SENIORS AND TRANSPORTATION PROGRAMS

Elderday Adult Day Health Care

Elderday secured a grant to explore finding a permanent home for our day program services, while we improved the daily experience of participants by giving our current location new flooring and a fresh coat of paint to help elders build good health and relationships in a welcoming environment.

Lift Line

Lift Line participated in long-term regional planning to purchase an operations facility which ensures that our services will continue to be available to the growing population of seniors and people with disabilities and enable them to access medical appointments for years to come. Lift Line also expanded services to provide rides for participants to access medical appointments 7 days per week from 8:00am to 4:00pm.

Meals on Wheels for Santa Cruz County

Meals on Wheels advocated for the needs of local seniors facing aging, poverty and isolation by contributing to a museum exhibit highlighting the challenges of aging in place. We also actively offered enrollment assistance to seniors to help them utilize expanded CalFresh benefits, allowing them to stretch their limited food budgets. We also took an important step towards going green. Switching to paper trays for home delivered meal participants means 95,000 single use plastics won't wind up in the landfill!



“It’s been
a life
changer.”



8,096

Children age 0-5



32,792

Days of subsidized
child care and
education



1,225

Pregnant,
breastfeeding and
caregiving mothers

CHILDREN & NUTRITION PROGRAMS

Kelly’s four-year-old son Zayven attends Nuevo Dia Child Development Center, one of the six early care and learning sites of the Child Development Division of Community Bridges. Kelly has a cottage food business making cupcakes and prior to enrolling her son at the center it was a huge challenge trying to work from home. Allowing her son to play on her tablet was the only way to get her work done and provide income for her family, but she knew that was not best for him. However, it was equally challenging to find an affordable and convenient early care and education program that could provide her son with enriching activities, opportunities for socialization and exposure to bilingual learning. She was thrilled to find the Nuevo

Dia center which is close to her home and offers tuition based on a sliding scale.

“I love the teachers here,” states Kelly.

“I wanted a bicultural program run by the community and I trust Nuevo Dia. Everything is kept up and clean. Programs are planned monthly. It’s a community.” Zayven has benefited from the socialization, structure and bilingual education at Nuevo Dia. He has learned how to take turns on the playground, sit still in story time and to communicate comfortably in Spanish and English.

“Zayven is in a harmonious environment, I’m getting my work done faster and when I pick him up I can devote my time to him. I feel so grateful for Nuevo Dia.”



6,747

Food parcels distributed



6,004

Hours of youth tutoring and enrichment activities



473

Hours of behavioral health counseling



A big challenge in our community is not knowing where to access help and having a place nearby where anyone can come to get help is really important.



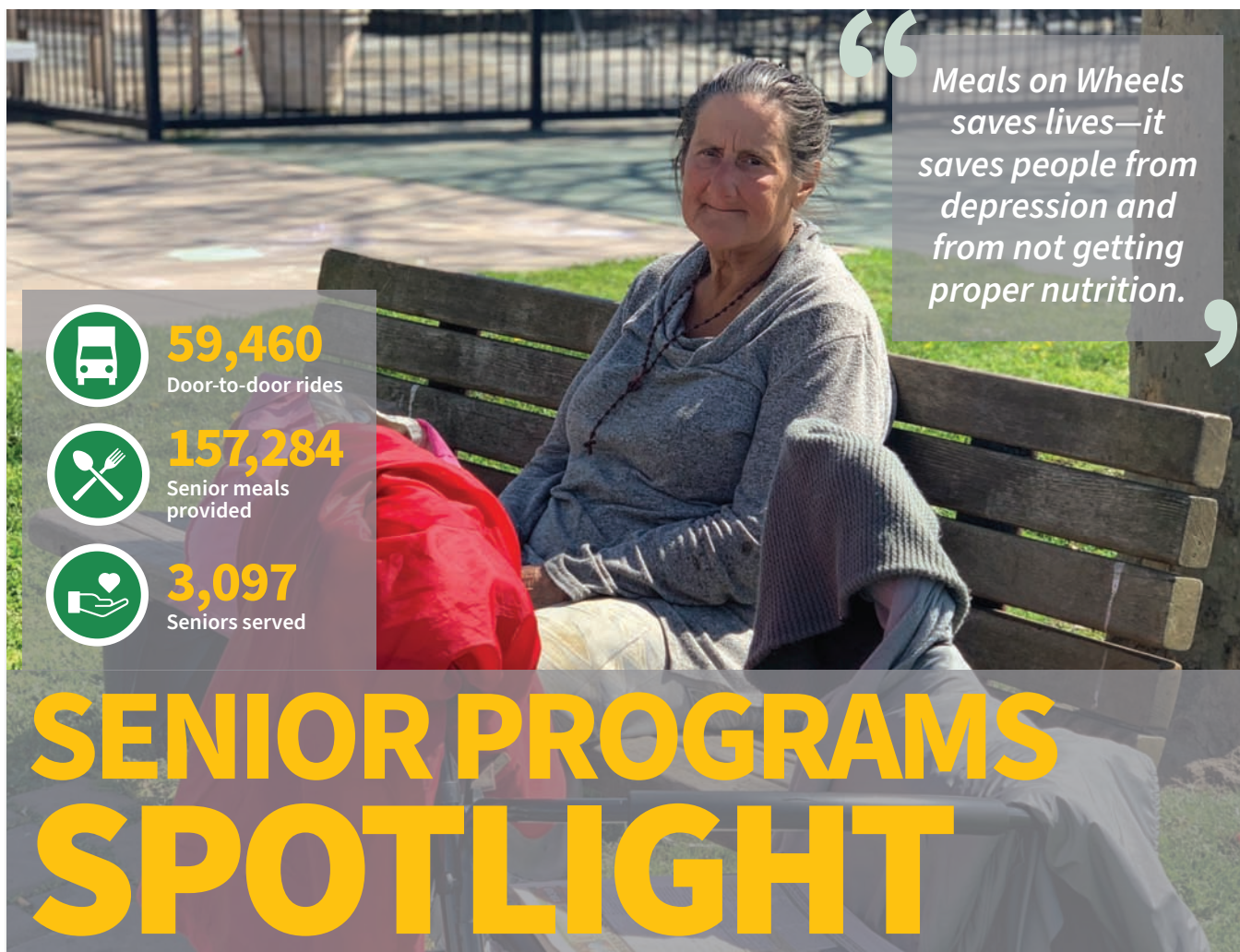
FAMILY RESOURCE COLLECTIVE

Ines is originally from El Salvador and lives with her partner and two children (age 5 and 16) in the Live Oak area of Santa Cruz. She started coming to a playgroup at Live Oak Community Resources (LOCR) eleven years ago when her son was five and since then has participated in many programs and also volunteered at the center. “Because of the support I have received at the center I no longer not feel alone and isolated.”

Ines’ older son was having trouble completing his homework and was matched with a tutor to get the educational support he needed. “It was really important for us to get help near our home as transportation is an issue and the tutoring really helped his grades improve,” says Ines. Now Ines’ son volunteers as a coach

for Futsal, a summer indoor soccer league for youth sponsored by LOCR.

Playgroups and parent education classes, including Triple P, taught Ines key parenting skills and tips including “the importance of validating and expressing feelings, which I have passed on to my children.” The Digital Literacy Program provided a path for Ines to connect with both her family and the community. “It helped me understand and talk with my son about what he is learning and it has also helped me advocate for myself and my neighbors at City Council meetings.” Ines values that LOCR continues to be here to support families in getting the education and resources they need to succeed.



“Meals on Wheels saves lives—it saves people from depression and from not getting proper nutrition.”



59,460
Door-to-door rides



157,284
Senior meals provided



3,097
Seniors served

SENIOR PROGRAMS SPOTLIGHT

Carrie attends the Meals on Wheels dining site at Loudon Nelson Community Center in Santa Cruz most weekdays to get a cup of coffee, a hot meal and companionship. Almost half of the people that attend this dining site are experiencing homelessness, including Carrie.

Carrie was a home health aide for many years, but financial problems, failing physical health, mental health issues and family estrangement have contributed to her being unhoused. “I’m just trying to get myself together a little bit because I want to go back to work,” says Carrie. She currently stays at the Salvation Army, but is required to leave at 5 AM each day and cannot return until after 5 PM. From her work as a home health aide, Carrie has severe arthritis, neurological damage to her neck and also needs a hip replacement. However, she doesn’t want to undergo the procedure as she knows that she will not be able to stay anywhere long enough to recuperate after the surgery. “It is really hard for me to be standing or walking all day. Just getting through the day is hard.” She looks forward to coming to the Meals on Wheels dining site to rest and “get a cup of coffee or a tea and see the same faces. I think that’s really important [because it provides] consistency.”

The balanced meals that Carrie receives, along with a safe place to relax, help sustain her throughout her long days. However, it is the respect from the staff at Meals on Wheels that keeps Carrie coming back.

DONOR SPOTLIGHT



System Studies has been investing in the Community Bridges mission for eight years through event sponsorship and its employee directed giving program. Founded in 1979 by the Simpkins family, the 40-year old privately held cable systems company has two Santa Cruz locations and fosters a culture of community giving among their employees. System Studies employees have the option to make donations via payroll deduction, which the Simpkins family then matches. The Team Giving committee meets once per year to select beneficiaries based on employee nominations. Community Bridges is a big hit among the group because most people have a friend or family member that receives services.

The impact of System Studies Team Giving grows roots deep into our local community and their partnership has allowed us to maximize the impact of our services and ensure that everyone in our community has the opportunity to unleash their full potential.

Interested in partnering with us to build your team and community? Call **831-688-8840** or email donations@cbridges.org.



VOLUNTEER SPOTLIGHT

The practice of Qigong allows us to take in the energy of life for health, happiness and harmony. Truth came to volunteer at Elderday Adult Day Health Care and spread that light among the seniors. “I felt I wanted more service in my life,” says Truth. “Helping and giving is such a joy, but I have also bonded with the participants. I feel like they are a part of my life and I am a part of theirs.”

“*In my classes we create a little heaven on earth. We create a little joy together that transcends everything they are going through.*”

Truth teaches Qigong at Elderday three days a week and has built a strong sense of connection among the seniors through movement, breathing exercises and laughter. “It’s one thing to laugh by yourself, it’s another to laugh with a room full of people. It’s amazing to see two people who don’t even speak the same language to look into each other’s eyes and share a deep sense of connection that crosses all boundaries.”

For information on how you can get involved, go to www.communitybridges.org/volunteer.



Community Bridges was named a 2019 Nonprofit of the Year by Assembly Member Robert Rivas (30th Assembly District).

TAKING ACTION IN THE FACE OF NEED

- | | | |
|-----------------------------------|---|---|
| Advocating for wage equity | ➔ | Sponsored 2019 Nonprofit Wage and Benefit Survey |
| Protecting our environment | ➔ | Lift Line launched the first paratransit electric vehicles in Santa Cruz County |
| Hands-on support for the homeless | ➔ | Meals on Wheels delivered shelf stable weekend meals and Mountain Community Resources offered access to showers, storage and case management services |
| Practicing financial stewardship | ➔ | Purchased property to house Lift Line fleet |
| Training future leaders | ➔ | Expanded tutoring to at-risk youth in Live Oak and Lower Ocean area in Santa Cruz |

BUILDING COMMUNITY



The Mountain Affair



Farm to Fork Gala



Food from the Heart Luncheon



Lift Line Electric Vehicle Ribbon Cutting

COMMUNITIES SERVED

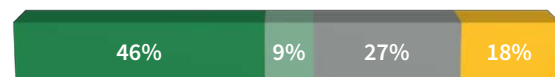
■ South County
 ■ North County
 ■ Monterey & San Benito County
 ■ Mid County



0% 10% 20% 30% 40% 50% 60% 70% 80% 90% 100%

PEOPLE SERVED

■ Children Under 5
 ■ Youth (6-180)
 ■ Adults (19-59)
 ■ Seniors (60 & over)



0% 10% 20% 30% 40% 50% 60% 70% 80% 90% 100%



PUBLIC & FOUNDATION GRANT SOURCES

Recognizing grants from July 1, 2018 - June 30, 2019

\$1 million & above

Federal Funds
County of Santa Cruz
California Department of Education
County Sales Tax Measure D

\$500,000 – \$1 million

Seniors Council of Santa Cruz County

\$100,000 – \$499,999

First 5 Santa Cruz County
City of Santa Cruz
California Air Resources Board
Sunlight Giving Foundation

\$50,000 – \$99,999

City of Capitola
California Association of Food Banks
Santa Cruz County Office of Education

\$10,000 – \$49,999

Community Foundation Santa Cruz County
Packard Foundation
Central California Alliance for Health
Monterey Peninsula Foundation
Kaiser Foundation
City of Watsonville

Dignity Health Foundation
City of Scotts Valley
East Bay Community Foundation

Up to \$10,000

Nicholson Foundation

BUSINESSES

Recognizing businesses from January 1, 2019 - December 31, 2019

Adobe
Alese Greene State Farm Insurance
Amazon Smile
Apple Inc.
Applied Materials Inc
AT&T Employee Giving Campaign
Barr Charitable
Bay Federal Credit Union*
Berry Family Foundation
Biggam, Christensen & Minsloff*
Bontadelli Inc
Branciforte Auto Repair
BTJ Enterprises
Burroughs-Braley Wealth Management
Cafe Cruz Rosticceria & Bar
California Giant Inc.
Canyon View Capital
Center for Humanistic Development
Central Pacific Engineering Inc.
Computer Studios*
Congregational Church of Soquel*
Deluxe Foods of Aptos Inc*

Driscoll Strawberry Associates Inc.
Falcon Trading Company*
Gayle's Bakery & Rosticceria*
Girl Scout Troop 11205
Google Inc.
Granite Construction Inc
Green Mountain Foundation*
Hastings Trust
Integrity Lending
Intel Corporation*
Italian Catholic Federation
Karma Mortgage Solutions Inc.
Langlois Fancy Frozen Foods Inc.
Lautman, Maska, Neill & Company
Lifespan Care Management*
Lifetouch
LinkedIn Matching Gifts Programs
LPL Financial
Metrology Equipment Services, LLC
Modern Woodmen Fraternal Financial
New Leaf Community Markets
Oath Inc.
Optimum Business Services*
Phil Allegri Electric Inc.
Philip Zahm & Associates, Inc.
Pledgeling Foundation
PLF Inc.
Rossi's Towing*
Salud Para la Gente
Santa Cruz Community Credit Union
Santa Cruz County Bank*
Santa Cruz Green Builders

Santa Cruz Mountains Makers Market
Santa Cruz Post Acute
Scott's Body Shop
Shadowbrook Restaurant
Shopper's Corner*
St Stephens Lutheran Church*
Staff of Life*
Subaru of Santa Cruz
Super Steam*
Sutter Maternity & Surgery Center
System Studies Inc.*
Talmadge Construction Inc.
Taylor's Office City
Togo's Sandwiches
Tortilla Flats
ToTel Communications
Turk the Roofer
United Way of the Bay Area
Volunteer Centers of Santa Cruz County
Wesley House
Zinnia's Home & Garden*

INDIVIDUALS

\$10,000 +

Anonymous
Tom Lehrer*
Donald Richards
Mari & Edward Rossi
Frank F Orr & Zoe Ann Orr Fund*
Christopher Scofield

\$5,000-\$9,999

Jacqueline Baker*
Brian & Patricia Herman

\$1,000-\$4,999

Anonymous* (2)

A COMMUNITY OF SUPPORT CONTINUED...

\$1,000-\$4,999 (continued)

Richard & Tory Beale
 Lisa Berkowitz &
 Craig Mitchell*
 Shannon & Tom Brady*
 Mary Fran & Edward Breiling
 Bill & Barbara Bryant
 Judith & Robert Burick
 Raymon & Trisha Cancino*
 Ken Carlson
 Paul & Tere Carrubba*
 Marc & Maurene Catto
 Cathy & Dan Cavanaugh*
 Jan Charles & Chris Jones
 Lin Florinda Colavin*
 Stephanie Connor Kent &
 Todd Kent
 Douglass & Hannah Crocker*
 Hilarie DeGroot
 Candace Dekkert
 Jack & Lisa Dilles*
 Dan & Jill Dion*
 Steven & Laurie Dobler
 Barbara J Drew Charitable
 Remainder Trust
 Meryl Everett*
 Leland & Susan Faust
 Eileen Fegan
 Pamela & Ronald Fields*
 Glenn Lyons & Nancy Gerd*
 Alese & Danny Greene
 Leonard Groner*
 Julie & Larry & Larry Haff*
 Amy & John Hanley
 Amy & David Harrington
 Robert & Denise Hartmann
 Dan Heiser
 Nicole Henneuse*
 Nanette & Donald
 Henneuse*
 Tim & Pamela Humphreys*
 Laurie & Peter Hunkel
 Cindy & Steve Jewell
 Julie & Ralph Kimball
 Katy King & Rich Carbajal
 Shelly King & John Schuur
 Elise Knittle &
 Quentin Williams
 Harold & Donna LaFont
 Patty Durkee & Paul Lawton*
 David & Dana Loury

Foundation
 Elise Mahoney
 Barbara Marasco*
 Michael Marchisio*
 David March & Patricia Stokke*
 Ginny Solari Mazry
 Steven McKay & Amy Keys
 Lynn McKibbin*
 Carolyn Misumi
 Michael & Monika Modest
 Robert & Joan Murphy
 Family Foundation
 Anonymous
 Anissa Novak & Joseph Hyatt*
 Richard & Marion Palm*
 Bruce Polo
 Cheryl & Joseph Pruss*
 Margaret Rhodeos
 Phyllis Rosenblum*
 Alison Ruday
 Robert Russell & Elsa Garmire
 James & Suzanne Salata
 Sheldon Satnick
 Tisha Scurich
 Frank Shelley
 Dora & Jeffrey Solinas
 Ada & P Earl Stuart Fund
 Katherine & Peter Sutton
 The Applewood Fund*
 The Sierra Fund
 Michael & Lesley Tierra*
 Lee & Mary Vaage*
 Jennifer Van Natta
 Laura Watson & Robert Packer
 Claudia & Alec Webster
 Tanya Wendling
 Bill & Rita Witmer
 Joanne Yablonsky*
 Randy & Steve Ziganti

\$500-\$999

Anonymous* (2)
 John C Adams
 Steven & Jennifer Anderson
 William Anderson DDS & Linda
 Anderson PhD*
 Jane & Carlos Arcangeli
 Carolyn B Atkinson
 Michele Bassi*
 Dr. Frank Baudino*
 Michael Best & Kate

Carrubba Best
 Debra Bour & Richard Strayer
 John Bowman
 Kelly & Martin Buhr
 Cori & Jeff Burt*
 Lois Carle
 Robert & Maryellen Cavanagh
 Brian & Kathleen Cayton*
 Robert & Brenda Chadwick
 Monica Cornish
 Geraldine Cutshaw
 Eric & Quinn Danner
 Grant & Anna de la Motte
 Donna & Grant DeGrande
 Dr. Edward & Jane Dewees*
 Susan Donatelli*
 Evelyn Blossom Dorosin*
 Bill & Vicki Dyas
 Jeffrey Eby
 Ross Foti & Shelley Motley
 Lisa Frenette
 Elaine & Michael Fresco
 Warren & Nadine Frush
 Bette Garcia
 Dionne Gayle*
 Peter Gelblum & Michele
 Estrin-Gelblum*
 Julie Gilbertson*
 Elizabeth & Roger Griffiths
 Robin & Gustav Gysin
 Kathleen & Glen Hamilton*
 Greta & Ethan Hamm*
 Mary & Joe Hammer*
 Maureen Hanagan
 Janie Hanson
 Penelope Hargrove & Daniel
 Friedman*
 Stephanie Harlan*
 Cindy & Fred Harried
 Janet Heien*
 John & Marlene Horvath
 Lowell & Wendy Hurst
 Slafkosky Family Fund
 at Fidelity Charitable
 Jack Jacobson & Laurel Tice*
 Amy Jimenez
 Dana Jones
 Majel Jordan*
 The Tim & Sarah Jur
 Foundation*
 Charles & Jacque Kessinger

Brandon & Trisha Kett
 Heather LaFontaine
 Nicolette Lee
 Robin Leidenthal &
 Raymundo Pereyra
 Gail Draezel Levine*
 James Lewis & Dale
 Ann Roche
 Donna Lind*
 Beverley Lindberg*
 Thomas & Yalenda
 Listmann*
 Paul Machlis & Mira Haslam*
 Scott Malsom*
 Susan Maresco & Walt Oicle
 James & Jean McCarthy
 Douglas & Susan McCown
 Charlene McLaughlan
 Marsha Muir
 Barbara Murray
 Peter Orr
 Joan Osborne
 Erik Ottem & Sherry Woo
 Scott Paine &
 Iwona Gorzynska
 Margaret Paylow
 Don Pilcher
 Michele & Denis Pomroy*
 Laurence & Violet Poretz
 Rowland & Patricia Rebele
 Wendie Leah Roberts
 Janice Rourke & Eric Fujishin
 Dorothy Ruby
 Michael & Amy Savage
 Carol & Frank Saveria
 Brandon Schell
 Harold K. Schellenger Jr.
 Julie Scurfield
 Judi Sherman*
 Jan Shurchild
 Andrew Shore
 Sara Siegel & Devin Gott*
 Helen Silva
 Robin & Greg Sirakides*
 Linda Skeff
 Lee Slaff*
 Michael & Lillian Smith
 Robert Suhr Jr
 Arlie Takahashi
 Virgil Thrasher
 Julia Tower

A COMMUNITY OF SUPPORT CONTINUED...

\$500-\$999 (continued)

Manuel & Anita Valdivia*
Steven & Terri Vomvolakis
Richard & Elaine
Wadsworth*
Alice Weigel*
Barbara M. White &
Robert M. Haight
Beverly & William Winchell*

\$100-\$499

Anonymous* (14)
Emily Abbink
Nicholas Abidi
Robin Abu-Shumays*
Doug & Edie Achterman*
Carol Adamic
Albert Agresti*
Sheryl & Robert Ainsworth
Joan & Joe Akers*
Geoff & Judy Alexander*
Mark Alexander
Wara Alexander*
Cyndi & Carlos Alfaro
Shirley Allen
Sharon & David Allshouse
Julie Almquist
Dan & Lynne Alper
Jacob Alsobrook
Linda Amoroso
Kirk Ance*
Craig Anderson
Joan Anderson
John Anderson
Jamie Andres-Larsen
David & Jane Andrew
Peter & Irma Andrews*
Brenda Angelo
Margit & Albert Aramburu
Alejandro Aranda
Donna Archer
Susan Archibald*
Gregg Armstrong
Elisha Arnone
Vera & Elliot Aronson
Nathan Atkinson
Diane & Carlos Azevedo
Yong Bai
Sandra Baird &
Steven Throner
Richard Baldwin

Richard Baldwin
Judith Balsam &
Michael Johnson
Ken Bame
Karen & Ernest Banuelos*
Hildegard Barbic
Esther Barbour*
William & Charlene Barnes
Mary Ellen Barr
Elizabeth Barragan-Buelna
Sharon Wilson Barrett*
Gary Bascou
Elizabeth & T Bastasch
Robert & Linda Bates
Julie Baylor
Nora & Harry Beardsley
Diane & Michael Beaty
Marie Beauchemin
Jeanne Beck
Patty Becker
Susan Becker
James & Kimberlin Beckett
Janet Bell
Lindsay & Michael Bell
Heber Belt
Robert Benge & Cynthia Benge
Ronald Benich &
Suzanne Rossi*
Robert Bennett
Cathy Benson*
James Berg
Marlyn Bergman
Carmen & Richard Bergmann*
Carol & Paul Berman
Martin & Martha Bernal
Duane & Wendy Berndt
Mark Bernhard &
Anne Steyaert
Susan Berry
Jerry Bertsch*
Marilyn Betz
Len Beyea*
Rachel Bickert
Debra Bicknell
Donald Biek Charitable Fund
Theresa & Lawrence Biggam
Bridget Binko & Fred Molnar*
Fran Bisconer
Nancy Bishoprick
Peter & Eileen Blacklock
Sally & Carl Blair

David Blakely
Eugene Blazek
Dianne Blocher
Sharon Bosk
Christine & Nikolas Bodge
Ralph LBogner*
Thomas Bolich
Debora Bone
Lowell & Sally Bookman*
Ronen Botzer
Laura Bowers*
Philip & Joy Bowles
Barry & Emma Jean Bowman*
Janice Boyd & Peter Boyd
Maryellen Boyle*
Louis & Nadine Branciforte
Ziggy & Jesse Rendler
Bregman Family Fund
Babette Brekka
Deborah Brewer*
Loreen & Frank Bridges
Scotty Brookie*
Penelope Brooks
Joe & Tracey Brookshier*
Gregory & Karen Brougham
Alan & Gweneth Brown
Holly & Dennis Browne
Ann Brucken
Laura Brucken
Christopher & Jenny Brundle*
Matthew Bruner
Laurie & Chester Bruton
Kathleen Buddington
Michael Buley
George & Megan Bunch
Ken Bunter
Christine Burdick
Lisa Burgstrom*
Carolyn Burke
Denise Burnett
Michael & Denine Butcher
Colleen & Robert Butterfield
Doyle Byford
Gay Byington*
Algyte & Gerald Cabak*
Maria Caballero-Robb
Anne Callaway
Deborah Calloway &
David Zucker
Beverly Calvo
Jennifer Cameron-

Sanclemente & Julio E.
Sanclemente*
Carol Campbell
Susan & Peter Canepa
Barbara W Canfield
Steven Capasso*
Joseph Carbajal
Barbara Carey
Theresa Carino
Penelope Carless*
Rex & Leslie Hudson Carper*
Patrick Carri & Mary Sinclair
Arthur Carson
Norma & Paul Cartwright
Ann Case
Janet Casto
Michael & Miriam Cavanagh
Jennifer Cerruti
Larry Chaney
Marian & Warren Chaney*
Lynn M Chappell
Kathryn Chetkovich &
Jon Franzen
Mark Chetkovich*
Winston Childers
Anne & Carl Christensen*
Gerald & Bonnie
Christensen*
Lisa Christensen
Ceil Cirillo*
Connie & Michael Clark
Gail & Laurence Clark*
Carne & Peter Clarke
Janet K Claunch
Carl Cobb
Bonnie Coben
Council Member Trina
Coffman-Gomez
Kermit Cole
Michael Collins
Lynn & Marylois Comeskey
Karen Conley
Neil Conner
Mary Jane Cope*
Constance Corbett
Sharon & Jack Corkrean
E Cornelison
David Cosio
Margy Cottle
Joan Courneen
Karen Cozza*

A COMMUNITY OF SUPPORT CONTINUED...

\$100-\$499 (continued)

Jane Crabb	Richard Eckley	Vicky & Thomas Garner	Sharon Hansen*
Shawn Cramer	Nancy & Gerald Eidam	Patty Garrett	Ian Hardcastle
Barbara & Howard	Georgeann Eiskamp	Sarah Gerard	Anne Harding
Crampton	Raymond Eitreim*	Jean & Peter Gergen*	Jeffrey Harding
Norman & Kerri Crandell	Caroline & John Elam	Offra Gerstein	Darrell Hardy
Diane Crawford*	Denise & Bruce Elerick	Frances Giardina	John & Barbara Harker
Sandi & Mary Crouser*	Robert Ellingsen	Mary Gilbert	Marina & Daniel Harkins*
Christina Cuevas*	Gerda Endemann	Virginia & Harold Gilbertson*	Margaret & Don Harlor*
Liza Culick & Geri Megielicz	Ana England	Jim & Linda Gilcrest	Dawne Harman &
Evan & Gabriela Currid	Harland & Johanna Epps*	Caroline & Donald Gile*	Gary Dubinsky
Kelly Daher	Leah Erez*	William & Cheryl Gillis	Kevin & Lidia Hasenauer
Linnea Dakota*	Bernadette Erlach	Wallraff Gilman	Jack Hassler
Susan & Richard Daniels	Charles Ernest &	Tom Ginsburg*	Cameron Haste
Gail M Davis	Joanne Tanner*	Richard & Judy Giovannoni	Rosalind & Harold Hastings
Jennifer & Glenn Davis	Patricia Evans	Stephanie Louise Giudici	Kathleen Hatfield
Rebecca Davis &	Judy Everett &	Jane C. Goddard	MaryAnn Hauf
Jacques Ferare*	Kevin Fernandes	Karen J Goehring	Lynn Hawkinson
Tomiko Davis	Stan Evers	Robert Goldstein	Bradley Hawthorne*
Beverly & James DeBarrios*	Daniel Facciola	Deborah & Paul Googe	Carolyn & Edmund Hayes
Nancy Degnan	Doug Factor	Lynn Gordon	Linn Hayes
Louis Del Prete	Barbara Fahrney	Margaret Gorman	Gary Heath
Donna Delong	Jamshid Faryar	Rebecca Gail Gottfried*	Myrna Helikson
Dennis DeMille	Linda Fawcett & Joe Griffin*	Paul Gould & Jenni Fox	Karen Hellgren-Allen &
Connie DeNault	Harry Federico	Jennifer Graber	Steve Allen
Gloria DeOcampo	Adela Feran*	David & Jean Grabost	Robert & Margaret Hennager
Mark Dettle	Marisela Fernandez	Tom Graves	Richard & Niada Hensolt*
Mark Devencenzi*	Robert & Thamara Fernando	Sarah Grayson	Jack Herman
Ivan Diaz	Nancy & Terrence Fetterman	Corina Green Dinneen &	Ronald Herrera
Louise & Jack Dietrich	Katie & Bruce Fiala	Michael Dinneen	Erma Jo & Thomas Hewett
Scott & Deborah Dillingham	Dianne & John Field	J Paul & Carol Greene	Kathleen & Fred Hibberd*
Kathleen Donovan	Jacqueline Field	Shasta Greene	Jill Hicks
Margaret Dow	Jacqueline Fields	Mark Greenfeldt*	Ralph & Jane Hiesey*
David & Melanie Downey*	Tom Finn	Danielle Grenier	Bill & Irene Higginbotham*
Virginia Draper	Jeryl Fischer	Mary Griffin	William Bond Higgins*
Georgine Drees	Christina Floyd	Betty Griffith	Thomas & Delores Hiland
Julie H Dresdner	Peggy Flynn	Jacquelyn Griffith*	Julie Hitchcock*
Prudence Drew*	Marilynn Foree	Wendy Gritton	Sherry & Phillip Hoey
Mark Drobac	Byron Foster*	Anna Guagnini	Geordie Holbert & Lisa
Nicholas Drobac Jr	John & Nancy Franich*	Joy Guerra	Hindman Holbert
Lynne Drummond &	Mark & Joanne Frasca	Suzanne Guerrero	Karen Holl*
Scott Polland	Don & Dolores French*	Jessica Guild & Julian Dahan	Lynne Holloway
Dianne Dryer	Joan Frey & John Harris*	Karen & John Gullic	Michael Holton & Janet Coit
Emily DuBois	Lorraine Fukuda	Richard Gurnee	Laina & Mickey Holzman
Mary Dubois	Kathryn Fulghum	Eric & Valerie Haff	June Hoover*
Annamarie & Lon Dugger	GV Fulscher*	Patricia Hahn	Richard Hough
James & Patricia Duncan*	Mike Fyfe & Heather Allen	Margaret Hall	Rhonda Howard-Vachon &
Kimberly & David Durham	Paul & Cristina Gallus	Lynette & Scott Hamby*	Craig Vachon
Cynthia Dzendsel*	Judy Galvan	Diane & Shawn Hamilton*	Kathleen Howlett
Nancy Eaton	Gerrilyn Gangitano	Art & Carolyn Hanley	Diane Hoxeng*
Mike & Mahin Ebrahimian	Betty Gangware*	John & Patricia Hannegan	Jeannine Hubbard
	Francis Garcia	Alice Hansen & Ron Heath	Sonya & Robert Hubenette

A COMMUNITY OF SUPPORT CONTINUED...

\$100-\$499 (continued)

Lynne Hubenette &
Lawrence Deghetaldi
Polly Hughes & Cecily Cahill
Robert Hughes
Janice Hulderson
Marilyn Humphrey
John Hunt & Teresa Clayton
Katinka & Jeff Hurley
Rachel & Romero Hurtado
Michael Hushaw
Glen & Lawrence Hyatt
Marianne Hyer
Don & Cathy Iglesias
Robert Imlay
Mary Edith Ingraham
Mary Ellen Irons*
Carolyn & Frederick Irvine*
Karen Isaacson
Amy Ivey & Jason Trey*
Nancy & Brad Jackson*
Shirley & Martin Jackson
Louis Jaeckel
Laurie & Richard James
Martha & Jack Jenkins
Daniel & Suzanne Jensen
Iris V Jensen
Paul & Beverly Jensen
Darrell & Janet Johnson
Gertie Johnson*
Therese Johnson
Laura Jones
Stan Jones
Kimberly Jorgensen
Pete Jussel
Steven Kajihara
Paul & Kazuyo Kaneko*
GI Kantor & Deborah Powers
Nina & Michael Kaping
Daniel Karen
Geri & Phil Karleen
Peter & Jeanette
Katzlberger*
Barbara Keeley
Richard & Judith Keels
John & Jean Kegebein
Jerry Keller
Mary & Anatoli Keller
Terry & Larry Keller
Mary Kelly*
Dorrie Kennedy & Del

Smith Penny*
Susan Kerr*
Robert & Michelle Kibrick*
Laurie Kiguchi
Elaine Kihara & David Sweet
Deann Louise Kinnear
Kent Kitchel
Richard & Diane Klein*
Kurt Kline
Ralph Kline
Gary & Kathy Knowles
Wanda & Ken Kocina*
Todd Korver
Karen Kroschwitz
Anjoli Kumra
Ellen Kureshi
Karen Kurokawa
Mike Labinger &
Cathleen Hudson
Janice & Michael LaFever*
Lata & Kiran Lala
Gerard & Carole Lallemand*
Harry & Nora Lalor
Barbara Lambert
George & Mari Lambidakis
Diane & Barry Lamé
Joan & Earl Lamprech
Edgar Landeros
Patricia Landreth
Judy & Bill Landrum*
Douglas & Kathleen Lang
Linda Larkin*
Gayle M. Larson
Susan Lasko & Jefferey Werner
Maria Latela
Michael Leahy
Connie & Speed Leas*
Mary Ann Leer*
Arnold Sterne Leff
Gary Lehner & Darryl Fiorina
Bette Leitzke
Nancy Lenox*
Joseph Leonard
Margaret Leonard
Wendy Leonard
Florence & Keith Lesar
Mateo Lettinich
Larry & Diane Levin
Marilyn Levin
William & Nancy Levonian
Gregory Lewis & Lori Medlen

Nancy Lewis &
Michael Morton*
Sterling Lewis DO
Wendy Lewis
Robert Ley & Nancy Twohig Ley
Evelyn & Marc Liesching
Johanna Lighthill
Shirley & Leo Linck*
Sharon & Charles Lindberg*
Karol Lindow
Denise E Lingham*
Reverend Eliza Linley &
David Richardson
Ming Chung & Kwan-Hwa
Wang Liou*
Cherilyn & James Lippman
Ronnie Lipschutz &
Mary Ann Wieland*
Marie Lipscomb
Marcia Lipsenthal*
Heather Liston
Patricia Lockett
Michael Long
Ilse & Benjamin Lopes
Deborah & Bruce Lorenzen
Nancy Loshkajian*
Paul Lubeck & Kristine Eriksen
Antoinette Lukrich
Nalyne Lunati
Jonathan & Suzanne Mace*
Julie Macecevic
Paula Mack
Ken & Nancy Macy*
Michael Roy Maffei
Chris Maffia
Lori Mahan
Melinda Malas
Damian Maldonado &
Javier Carrillo
Jesus Maldonado
Linda & George Malloch
Merrill Malvini*
Tony Marden
Angela Marie
Harlene Mariolo
Judith Mariscal
Merrilyn & Ronald Marker*
Cheryl Marquez
Laura Martin*
Marcia Joy Martin
Marty & Robert Martin*

Charles & Judith
Martin-Hoyt
Ron & Ryan Martino
Jeanelle Martin-Wilkins
Michael Marzorini
Laverne & Michael Masini
Thomas & Jeanne Mason*
Judith Masters*
Sally Matheson
Janice Matthews
Kirsten Maure &
Gregory Wimp
Mary Jo May
Stephanie & Neal Mayer
Mike Mayo
Ellen Mazaika
Lisa & Dean Mazzei
Richard & Claire McAdams
Elroy McAtee &
Shonnie Uslaner*
Eileen McCann
Michael McCawley*
Craig McCroskey &
Bronwyn Black*
Richard McDermott
Patricia McDonald
Amy McEntee
Seth McGibben
Tish McGlynn &
James Dixon
Joseph & Pamela McHenry*
Mary & James McKenna
Yvonne McKenna
Carol McMillan
Donna McMillan*
Ed & Karen McNamara*
Charles & Susan McNiesh
Rebecca McNiven
Supervisor Bruce &
Mary McPherson*
Dorothy R Mellander
Paula Mellard
Cindy Melter
James Memmott &
Nicole Morelli*
Edward & Debra Menges
Smyrna & Bernardo Merilos*
Michael Merrithew*
Susan & Gene Meschi*
Ken Meshke & Barbara
Sprenger*

A COMMUNITY OF SUPPORT CONTINUED...

\$100-\$499 (continued)

Charles & Ann Michaelis*
 Blake Wayne Milam
 Judith Milgram
 Carol Miller
 Ruth Milne
 Katharine Minott*
 Chad Mitcham
 David Mitchell &
 Daisy Manten
 Thomas Mitchell
 Stuart & Marilyn Molyneux
 Gloria Montero
 David Montgomery DDS
 Shirley Mooers*
 Lynn Mooney*
 Kenneth & Anne Moonie
 Christine Moore*
 Leslie Moore
 Michael Moore
 Linda & George Moran
 Olivia & Michael Moran*
 Steve Morrin
 Doug Morris
 Ian Morris & Kathy St John
 Pamela Morrison &
 Marc Weiss
 Michele & Jim Mosher*
 Dania Moss
 Sarita Motove
 Cambria Fast & Kevin Mulkey
 Christopher Murray
 James Musbach
 Mahmoud Naghshineh
 Danny Nance & Joy Sanchez
 Mark Nance
 Matthew Nathanson
 Fernando Nell
 Joanne Nelson
 Linda Nicholson &
 Thomas Adam
 Jesse & Christine Nickell
 Gary Nickerson &
 Judith Burseth
 Mary Lou Nicoletti
 Dan Nishimoto*
 Kallee Noel &
 Andrew Wilkinson
 Phyllis Norris
 Esther & John North
 Peter Norton

Annemarie & Lance Nottle
 Joseph Nussbaum
 O'Connell Family
 Maureen OBrien
 Esther O'Brien*
 Robert Odland
 Debbie Ogawa*
 Daniel Oliver*
 Lawrence Olsen*
 Daniel Orange
 Jane Orbuch
 Jean Orr
 David & Carrie Osland
 Albert Osterkamp
 Patricia Oyama*
 Gula Palmer
 Gita Panchal
 Susan Pappas
 Susan Parker
 Susan Parodi*
 Winnie & Rym Partridge
 Darian Patchin
 Adair Paterno
 Christine & Richard Patton
 Christine Pavan
 Scott Payne
 Stephen Pearl
 Louise Pearse
 Patricia Pease*
 Darrell Peaveler
 John & Barbara Pemberton
 Tom Pennello
 Gloria & Richard Penrose
 Michael Petrini
 Nehal Pfeiffer
 Pfothenhauer Wilshusen Family
 Jerel Philip
 Tom Pickering
 Lynn Pielow
 Stephen Pierce
 Carl Pimentel
 Patricia Pimentel*
 Marian & Frank Plant*
 Sue Polk
 Rick & Robin Polse*
 Ron Pomerantz & Jane
 Weed-Pomerantz
 Stephen Pond*
 Donna Pope
 Sara Pope & Ana Pope-Cullen
 Mary Portillo

David Powers
 Peter Poznanski*
 Beatrice Prado &
 Mildred Honeywell
 Bernard Price
 Michael Price
 Todd & Jill Prindle
 Georgiana & Peter Purtscher*
 Cynthia Quattro PA, LAC, DAOM
 Guadalupe Quintero
 Lisa Racine & Dennis Heekin
 Julia Ragen
 Victoria Ralloway Tstee &
 Donald Bugni Tstee
 Melody Randel*
 James & Diana Rapoza*
 Garry & Ruth Rasmussen
 Amy Rather*
 Gary Rauscher*
 Beverly Rayner
 Sandra Reimer &
 Douglas Morris
 Willam Rentz
 Heidi & David Reynolds
 Eric Rice & Patrice Maginnis
 Andrea & Donald Rich*
 Deborah Rider
 Barbara Ridgeway &
 Sarah Drobshoff
 Lacy Rieber
 Walter Rilliet
 Grant & Pamela Ring
 Rinker-Kan Family*
 Michael & Elizabeth Rios
 Raymond Rischpater
 Roslyn Rissler*
 Alma "Carrie" Ritsema
 Robert & Sharon Rittenhouse
 Lizanne & Allan Rixen
 Lisa & Tim Robinson
 Joyce Roby
 Pamela Roby
 Shane Rodriguez*
 Eliane Roe
 Joseph & Linda Romeo
 Catherine & John Romero
 Kim & Steve Rooks
 Andrea Rosenfeld
 Amy Ross
 Dieter Rothmeier
 Lana & Mark Rough

Ronald Rowe DDS
 Thomas Rucker &
 Susan Packer
 Robert & Joanne Rudolph
 Bonnie Ruger*
 April Masters Ruhne &
 Brent Ruhne
 Cherri Rupert-Canfield*
 Phillip & Janet Rupp
 Sandra Ruso
 Judith Russell
 William & Janice Ruxton*
 Mary Ryan
 Anne Ryanatkinson
 Doris & Donald Sakamoto
 Leticia Salazar
 Joseph & Barbara Salgado
 Linda Sanguinetti
 Maxine Saunders*
 Judith Scarabello
 Jo Schaffner
 Emilia & Roland Schambeck
 Ruth & Walter Schillinger
 Nancy Schlachte
 Raymond & Loree Schmidt
 Shirley Schneider
 Michael Schoeneman
 Ron & Barbara Schroeder
 Alice Schweizer
 Janet Schwind
 Sharon Sciabassi
 Celia & Peter Scott*
 Jonathan Scoville &
 Tandy Beal*
 Daniel & Lucienne Seftel
 Marc & Françoise Seftel
 Lisa Segnitz
 James & Shannon Seigle
 Jaap Selman
 Susan & Charles Selvidge
 Andrew Shachat
 Steven Shade
 Dorothy Shaffer
 Susan Shane
 Helen P. Shapero
 Cindy Shepherd
 Cindy Sherrett
 Nancy & Ray Sherrod*
 Robert Shoemaker
 Jamie & Shane Shook
 Cumba & Magnus Siegler

A COMMUNITY OF SUPPORT CONTINUED...

\$100-\$499 (continued)

Dieter Siegmund
Kathleen Silva
Curtis & Karen Simmons
Stuart Simon
Sharon & James Simpson
Lan Sims
Lynda Sisk
Rob Slawinski &
Carol Slawinski
Charlotte & Derril Smith
Elizabeth Smith
George Smith
Holly & John Smith
Theresa Smith
Stanley Sokolow
Mary Soltis
Lois & Michael Sones*
Annie Song
David & Mary South*
Joan Spannagel
Steven & Diane Spence
Sycha Spengemann
Walter & Janice Spichtig
John & Elke Spires*
D Michael Splain & Susan
Ritter Splain*
Dale & Carolyn Sprinkle
David Spriggs &
Anne Tharpe
Jeffrey D Steimer
Suzanne & Paul Stephens
Edwin Stevens
Marc & Julie Stiller
Hilary Stinton
Juanita Stock
Robert & Therese Stoll
Kathleen Strasnick &
Dorothy Tulane
Pete & Lorraine Strassman
Anne Striffler
Susan Stuart
Lorraine Stucki
Cornelius M. Sullivan
Niels Sundermeyer*
Betty Sutherland &
Wendell Glenn
Karen & Steven Sutherland
Claire Swetland &
Denis Webb*
Sebastian Little &

Tonje Switzer
John M Takemoto
Adele Talmadge
Pierre Tardif
Ashley Taylor
Liz Taylor-Selling &
Dan Selling*
Lea Tedrowe
Terry Teitelbaum*
Paige Thibodeau DC
Barbara Thomas*
Byron & Anne Thomas
Dawn Thomas
Jerry Thomas*
Phil Thomas*
Sue Thomas & Charles
Tremper*
Elene Thompson
M Earl Thompson &
Carol Thompson
John Thornton
Diane Thorson
Dale & Barbara Thurston
Laurel Tice & Jack Jacobson
Ellen Timberlake
Lorrie Timmons
Miriam Ting
Jevon & Gary Todd
Fred & Jan Tomlinson
Jose Torres Jr
Jenay Tose
Julie Trahan*
Elizabeth Traugott*
Mark Traugott
Paul Treanor
Clara Troyer*
Patrick True
Kristen Tsukushi
Naomi Tuck
Tracy Tucker
Cheryl Tutko*
Susan Marie Ueno*
Doug Underhill
Bill Underwood & Karen Zelin
Sherman Unell*
Douglas Urbanus
Calvin A. Uren
Anna Vaage
Richard Vasquez*
Leon & Maria Ventura
Larry Vilardo

Donald Vodden
Lorraine Voight*
Harrison Walls
Paula Walter
Elinor Wapner
John & Sandra Warren*
Valerie & Rodney Warren
Lorraine & Michael Washington
Kristine & Vincent Waskell*
Carolyn Watanabe
Elizabeth Watson*
Janice & Robert Weaver
Pat & James Weber
Rick & Martha Weiss
Stephen Weldon
Jeffrey Wellerstein
Judith Wells
Boni & Raymond Wendling
Erich Werner &
Catherine Werner
Byron Wheeler
Karen Whitcomb*
Sheila Wickens & Roger Bach
John Wiechman &
Patricia Emard
Kimberly Wigley
Russell Wiitala*
Jim & Geraldine Williams
Katherine & Steve Williams*
Patricia & James Williams*
Robert Williams
Jennifer Wills & Theresa Stone
Pfothenauer Wilshusen Family
Wilson Family
Mike & Janet Windt
Daphne Winkler*
Jonathan & Jill Winston*
Patty & Ken Winters
Beverly Winthers
Jonathan & Susan Wittwer*
Georgina Wong*
Nancy Woolf
Candace Wright
Gail & Alan Wright
Jan & Les Wright
Casey Wu
Maria Yap*
Greg Yarbrough
Gwen Yeo & Richard Yeo
Stephen & Barbara Young
David Yule

Connie Yurkovich
Sam & Margaret Zablocki
Bonnie Zahm
Judy Ziegler
Donna Ziel*
Sylvia Zito & Michael Tozer*
John Zuur
Frank Zwart &
Julia Armstrong
Brian & Carol Zwetzig

Under \$100

We are grateful for the 1,461 individuals who gave \$1-99 in 2019! If you have questions about your contributions, please don't hesitate to contact us anytime at info@cbridges.org or (831) 688-8840. Thank you for making a difference!

HONOR DONATIONS

Nick & Stella Banovac
Lisa Berkowitz
Paul Breese
Robert Burkhart
Maya Campbell-Unsoeld &
Ryan Silsbee
Raymon Cancino
Carol Childers
Elderday Staff
Crystal Gianopoulos
Catherine Gross
Michelle Gross &
Chuck Gross
Mary Hammer
Sandra Hawthorne
Vivian Headings
Tyler, Quinn, Erin, Evan,
Harlan, Christian,
Jack, & Kate
Janice Hulderson
Guadalupe Mendoza
Forrest Parker
Ruth Seigle

A COMMUNITY OF SUPPORT CONTINUED...

MEMORIAL DONATIONS

Frank Beyea
Mark Briggs
Harriet Deck
Rhea DeHart
Beatrice Drobac
Donald Fahrney
Donald and L Forst
Leonard Gerstein MD
Jay Gunter
Paul Hausner
Sheila Hough
Nancy Lockwood
Ben & Virginia Lopes
Aurelia Maldonado
Telford and Alleene Marsh
Shinichi Misumi
Diane Monts
Betty Rose Paller &
Orrie Paller
Maganlal Panchal
Bart & Barbara Snyder
Katherine "Kitty" Sutton
Carol Taylor
Lillian Wilder
Thomas Zia

IN-KIND DONORS

Airtec Service
Alan and Denise Holbert
Alfaro Family Vineyards
Amber Waves Jewelry
Andrea Carvey Art
Andromacha Beads
AnnieGlass
Armitage Wines Corp
Art Services
Awakenings Bookstore
Barbara & Co. Catering
Bargetto Winery
Barnyard Birdhouses
Bee Happy Today
Better With Time
Betty Burgers
Big Paw Olive Oil Company
Bloom & Bestow
Boulder Creek Golf &
Country Club
Boulder Creek Pizza & Pub

Bound By Hand
Brookdale Lodge
Cabrillo Stage
California Jam Queen
CC Apothecary
Central Home Supply
Chardonnay Sailing Charters
Chibi Jay Designs
Cooper-Garrod Estate
Vineyards
Costanoa Lodge
Damselfly Designs
Discretion Brewing
Disneyland Resort
Dynamic Press, Inc.
El Palomar Restaurant
Elkhorn Slough Safari, LLC
Ernie's Service Center
essential sol
Flora/Fauna Art
Follow the Sun
FreedomTouch
Golden Bee Apothecary
GoldenGirl Designs
Gratitude Pastries
Great Infusions Co.
Hahn Family Wines
Healthy Dragon
Hilltop Wash & Dry
HisBroidery
Kathryn Kennedy Winery

Kayak Connection
KION
Kitayama Bros Inc.
La Selva Beach Recreation
District
Lester Estate Wines
Linda's Seabreeze Cafe
Loma Prieta Winery
Lost Mined Jewelry
Luna Ceramica
Marianne's Ice Cream
Massage Harbor
Microsoft
Mosaic Visions by Vickie
Mount Hermon Adventure
Center
Mountain Community Theatre
Mountain Spirit
Native Nirvana
Nicholson Vineyards
Oh-Dip-liscious!
O'Neill Yacht Charters
Pacific Wave Surf Shop
Partage Winery
Pebble Beach Company
Penny & Pine
Persephone Restaurant
Pristine Clinical Skin Care
Reign Blow Dry Bar
San Francisco Forty Niners
San Francisco Museum of
Modern Art

San Lorenzo Valley Winery
Santa Cruz Balsamics
Santa Cruz Film Festival
Santa Cruz Mountain
Vineyard
Santa Cruz Mountains
Winegrowers Association
Santa Cruz Shakespeare
Santa Cruz Somatic Massage
SAP Software Solutions
Segway Santa Cruz
Sequoia Silver
Shadowbrook Restaurant
Shale Canyon Wines
The Garden Company
The Green Waffle LLC
The Missing Bead
Tilapia Film
Uncommon Brewers
United Way Monterey
County
Vino Cruz
Vintage Moon at Sea Level
Vitamin Sea Sales
Watsonville Coast
Produce Inc.
Wild Roots Market

***Loyalty Circle** – honoring donors who have made gifts for five consecutive years or more.



Volunteers from SAP donating their time and talents to give back to their community.

YOU CAN MAKE A DIFFERENCE

I have been very impressed with the work of Community Bridges and I am proud to be able to offer financial support to the organization's varied and worthwhile efforts.

~ Christopher B. Schofield, Trustee of the Schofield-Locke
1999 Charitable Remainder Unitrust.

In 2019, Community Bridges received a \$150,000 gift from the Schofield-Locke 1999 Charitable Remainder Unitrust for our endowment fund to ensure long-term security and sustainability.

YOUR LEGACY

If you want to make a lasting positive difference in Santa Cruz County, consider including Community Bridges in your financial plans. Community Bridges' programs serve all kinds of people from every part of the county. The right planned gift can provide you and your loved ones with tax and income benefits, while leaving a lasting impact on the people and programs that mean the most to you. To leave a gift in your will or trust, just discuss this language with a qualified professional:

"I bequeath \$_____ or _____% of my estate to Community Bridges, tax ID# 94-2460211, located at 519 Main Street, Watsonville, CA 95076."

You can leave your gift for general purposes, or for a specific program. You can direct your planned gift to the general fund, or to our endowment.

APPRECIATED ASSETS

An easy way to make an important gift is to donate assets, including appreciated shares of stocks and mutual funds. This may be one of the most tax-efficient ways to give. You may be able to receive a deduction based on the full appreciated value, and you might also avoid the capital gains tax that would have been due had you sold the shares.

RETIREMENT BENEFITS

If you are over 70 ½, you are required to take distributions from an IRA. Instead of creating a taxable event for yourself, make the distribution a charitable gift. As long as the distribution is paid directly to Community Bridges from your IRA administrator, the amount will not be counted in your taxable income for the year, which may result in tax savings for you!

This is not legal advice. Please consult with a qualified professional to determine how these gifts will affect you.

If you have questions about how your gift can impact Community Bridges, contact Anna Vaage, Senior Development Analyst at 831-688-8840 ext. 205 or annav@cbridges.org.

3 EASY WAYS TO SUPPORT COMMUNITY BRIDGES

1. Matching Gifts



Many companies offer matching gift programs to encourage employees to contribute to charitable organizations. Check with your employer today!



2. Vehicle Donations

Donate your vehicle and receive a tax-deductible receipt!

Call 855-500-RIDE (7433)



3. Be a Bridge Builder!

Join our monthly giving program. Visit communitybridges.org/donate to sign up.

YOUR IMPACT

EXPENSES

Administrative and development services are only 14% of our operating budget, however, they are key to our success. Community Bridges leverages these core services such as accounting, human resources, facilities management, and development to support 10 unique programs. This allows the agency to realize economies of scale and reduce expenses like bulk purchasing of health insurance, while allowing the program staff to focus on what they know best – serving the people of Santa Cruz County.

REVENUE

While support from individuals and private foundations makes up only 5% of our revenue, these resources are critical to addressing community needs. These funds allow us to respond to emerging issues and expand the breadth of services we offer. Non-governmental revenue sources are more flexible and can fill in gaps when government funding shifts unexpectedly.

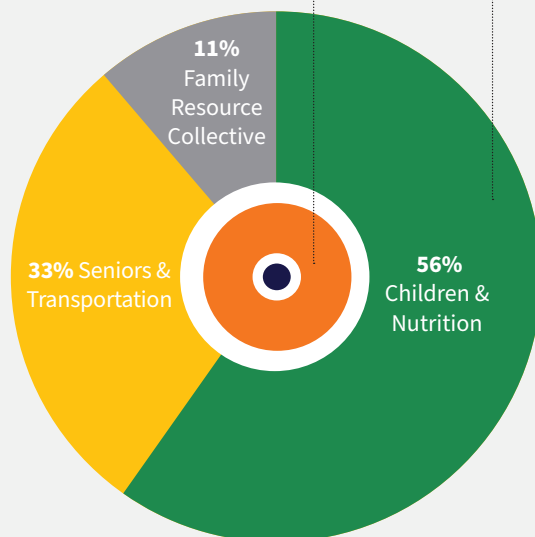
Operating Expenses

86% Direct Program Costs

10 programs serving 17,564 seniors, families and children

14% Core Mission Support

13% Shared Human Resources, Facilities, Finance and Contracts
1% Shared Fundraising and Partnerships

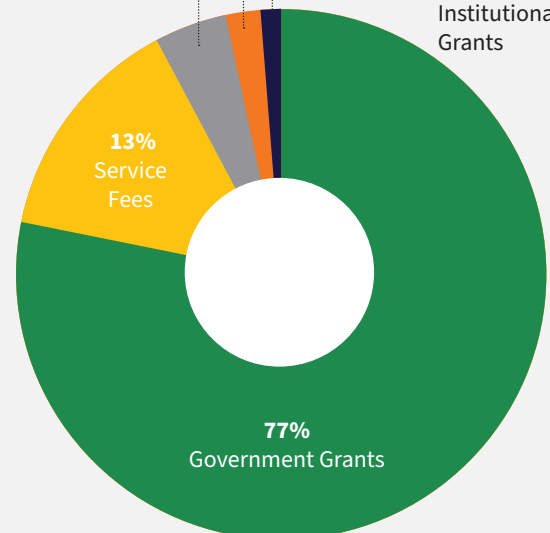


Operating Revenue

5% Individual and Business Contributions

3% Interest & Other

2% Foundation and Other Institutional Grants

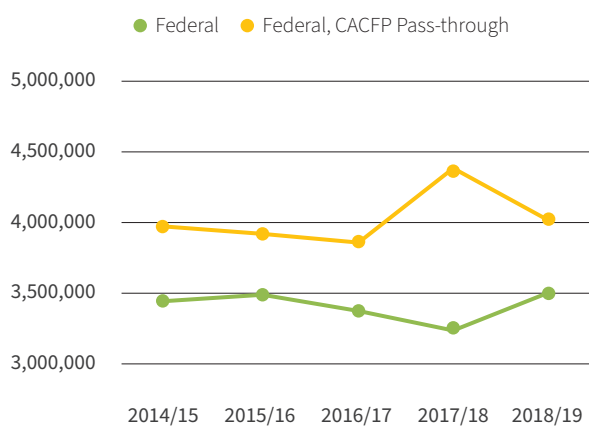


FIVE YEAR REVENUE TRENDS

Since our founding, the federal government has been the largest source of revenue. Over the last five years as funding for projects and services fluctuates, general federal funding has fallen by 15%. Federal funding for the Child and Adult Care Food Program (CACFP) has remained stable.

Federally funded programs CACFP and WIC are an important part of children eating healthy as they grow, while injecting nearly \$8 million dollars into the local economy each year. As other agencies close and consolidate, our services stand to expand in coming years in cases where our fiscal strength, longevity and diversity allows us to step in.

Five Year Federal Funding Trends

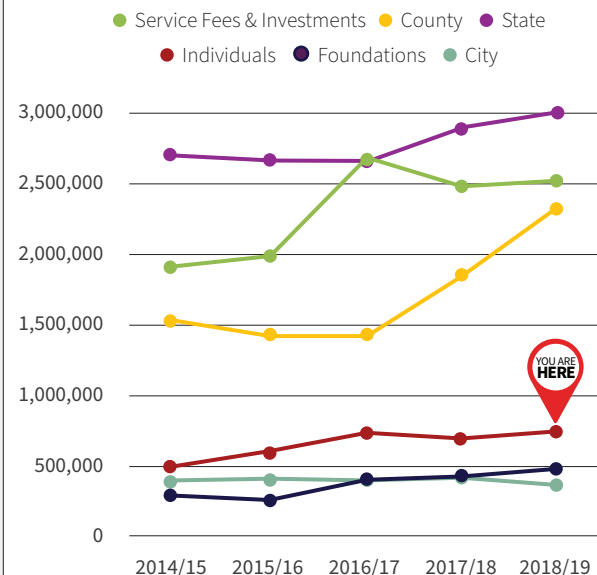


*WIC payment voucher value not included.

State funding has increased 19% in the last five years, as more families have been able to access quality early care and education. County funds have increased 60%, half of this

coming from the recently passed county sales tax measure supporting accessible transportation for elderly and disabled residents to access healthcare services. City funding has remained relatively flat, although saw a 16% reduction in the last 12 months.

Five Year Selected Revenue Trends



To grow and gain control of our revenues, we have increased our fee for service and investment revenue by more than 30% in the last five years. We have also dedicated focus to seeking grant opportunities that fund services and operations.

And, thanks to generous individuals, donations have increased nearly 65% in the last five years. Although still a small percent of the budget, individual giving is vital to our pursuit of sustainability and diversification.

FINANCIALS

STATEMENT OF ACTIVITIES

for the Year Ended June 30, 2019

Support and Revenue

Government Grants	\$11,990,927
Service Fees	2,017,154
Individual and Business Contributions	735,475
Foundation and other Institutional Grants	377,075
Interest and other	443,526
Total	\$15,564,157

Expenses

Child & Adult Care Food Program (1)	3,533,786
Women, Infants & Children (WIC)	1,911,954
Child Development Division	1,814,250
Meals on Wheels	1,419,381
Lift Line	1,701,353
Elderday	1,268,705
La Manzana Community Resources	489,448
Mountain Community Resources	332,007
Nueva Vista Community Resources	304,856
Live Oak Community Resources	270,183
Management General	1,930,711
Fund Development	226,232
Total	\$15,202,866

Excess/(Decrease) of Support over Expenses	\$361,291
Increase in Grant Funded Assets	797,825
Depreciation	(153,124)
Increase/(Decrease) in Net Assets	1,005,992
Net Assets, Beginning of Year	\$2,769,950
Net Assets, End of Year	\$3,775,942

STATEMENT OF FINANCIAL POSITION

at June 30, 2019

Cash and Cash Equivalents	\$440,977
Investments	620,684
Grant Receivables	2,255,811
Other Receivables	544,784
Inventories	19,392
Prepaid Expenses	305,292
Deposits	39,399
Property and Equipment, net	7,083,689
Total Assets	\$11,310,028

Accounts Payable and Accrued Expenses	\$1,245,373
Salaries and Benefits Payable	852,634
Deferred Revenue	279,128
Obligations under Capital Lease	3,161
Notes Payable	4,887,206
Reserve Fund	266,584
Total Liabilities	\$7,534,086

Donor Unrestricted Net Assets	3,321,943
Donor Restricted Net Assets	453,999
Total Net Assets	\$3,775,942

Total Liabilities and Net Assets **\$11,310,028**

1. Includes \$3,502,759 distributed directly to day care home meal sites.
2. These audited statements do not include the value of the WIC food vouchers. In 2019, WIC distributed 76,361 voucher packages with the total value of \$4,320,757.

These numbers reflect our 2018/19 financial statements as audited by Kaku & Mersino, LLP. For a complete financial report, please contact us at (831) 688-8840 or visit communitybridges.org/financials.

OUR MISSION

Together, our family of ten programs delivers essential services, provides equitable access to resources, and advocates for health and dignity across every stage of life.



COMMUNITY BRIDGES
PUENTES DE LA COMUNIDAD