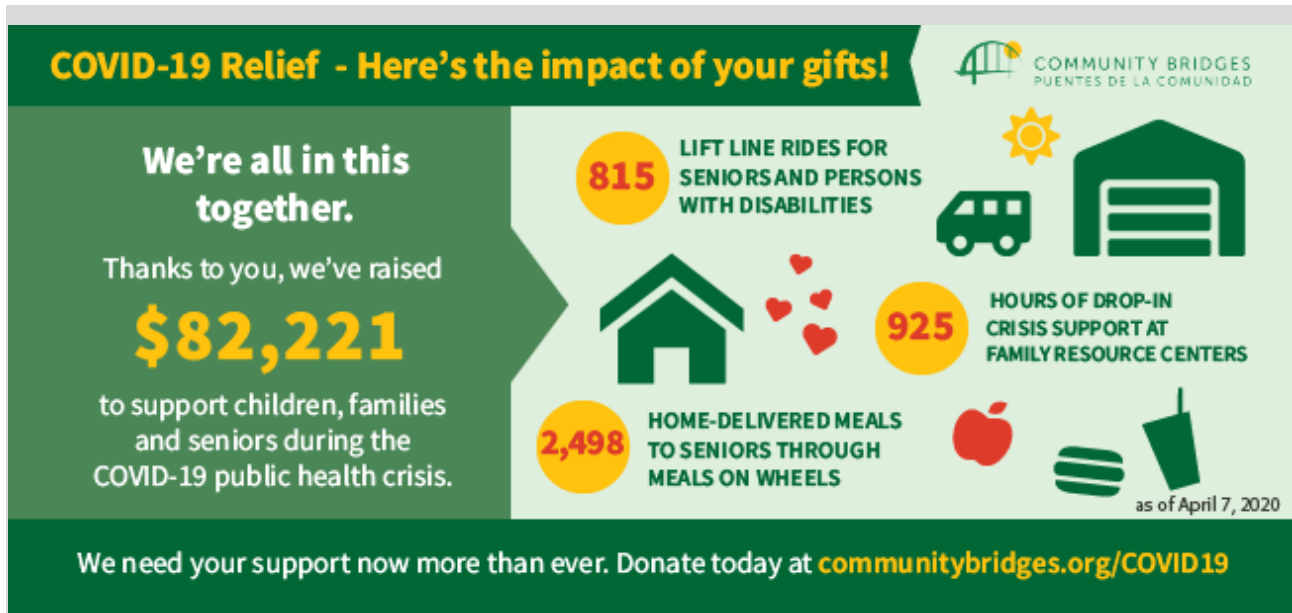




COMMUNITY BRIDGES
PUENTES DE LA COMUNIDAD

MAKING A DIFFERENCE TOGETHER

April 14, 2020



MEETING COMMUNITY NEEDS IN OUR NEW REALITY

In a time of crisis our community has come together to support thousands of our neighbors whose lives have been severely impacted by the COVID-19 pandemic. Thank you to the 228 people that have given to support Community Bridges as we continue, and expand, essential services to children, families and seniors across the county.

Demand for **Meals on Wheels** home delivery services has increased by 35% and the program is utilizing **Lift Line** drivers and wonderful community volunteers to safely deliver meals to seniors in their homes. **Elderday Adult Day Health Care** remains temporarily closed, but Community Bridges is creating a "without walls" program by providing telephonic and video conferencing interaction to create a continued sense of place for medically complex seniors, as well as providing doorstep medical care as needed. These innovative solutions are a few examples of how we are reimagining services in the time of COVID-19.

Pregnant women and children are still receiving their **WIC** benefits, but now electronically, and new applications are being processed almost exclusively over the phone. The **Family Resource Centers** are working hard to get families the resources and support they need during this crisis. They are providing grocery gift cards to families in need due to reduction in hours or job loss due to COVID-19 - focusing on people that are not eligible for traditional unemployment benefits.

How Can I Help?

Donate supplies: Unopened boxes of sterile gloves, medical gowns, disinfectant wipes and hand sanitizer. Contact info@cbridges.org if you have items to donate.

iPads for seniors: Used, in good condition, iPads/tablets are needed to provide to Elderday participants with connection to staff for monitoring, guided exercise, and therapy/support groups, as well as group chats with other participants to reduce isolation. Contact info@cbridges.org if you have an iPad or other tablet to donate.

Make a donation: Your gift will help us sustain services for all programs during this challenging time, despite increased need and reduced funding. [Click here](#) to donate now.

Don't forget about the 2020 Census

Ten minutes of your time will impact the next 10 years for our community. Spread the word that the 2020 Census is happening now and can be completed online at 2020census.gov.

To date 51% of people in Santa Cruz County have completed their questionnaire. Let's move up these numbers now. [Click here](#) to check census response rates by county.

Ray's Corner



COURAGE, COMPASSION & DEDICATION

Sometimes it takes a crisis for us to appreciate the tremendous service nonprofit workers provide to our community. Right now, across Community Bridges' 10 programs, hundreds of childcare workers, social workers, Meals on Wheels drivers and kitchen staff, Lift Line drivers, advocates, receptionists, and WIC eligibility workers are still working to deliver and enroll people in essential services. Their commitment ensures our most vulnerable community members are fed, clothed and sheltered during this crisis.

I want to thank my coworkers for their courage, their compassion, their dedication to others, and most importantly, for their willingness to offer support when their own lives are impacted. I hope that local government recognizes the contributions that nonprofit providers have made to support the health of our county during this emergency, and responds with real investment in our sustainability so we can continue to be a safety net in times of future crisis.

[DONATE NOW](#)



Community Bridges Family of Programs

Child & Adult Care Food Program | Child Development Division | WIC | La Manzana Community Resources |
Live Oak Community Resources | Mountain Community Resources | Nueva Vista Community Resources |
Elderday | Lift Line | Meals on Wheels

Community Bridges is an exempt organization as described in section 501(c)(3) of the Internal Revenue Code; EIN #94-2460211. Donations are tax deductible in excess of the value of any goods or services provided in exchange for your contribution.