



BOARD OF DIRECTORS

Wednesday, February 15, 2017

5:00 PM to 7:00 PM

Elderday: 100 Pioneer Street, Santa Cruz, CA 95060

AGENDA

- 4:30 Dinner**
- 5:00 1. Call to Order/Establish Quorum**
- 5:02 2. Agenda Review**
- 5:05 3. Announcements/Program Updates**
3.1 MCR Phone banking
- 5:10 4. *CONSENT AGENDA – Action Items**
In approving the consent agenda, the Board is approving recommendations within each committee's minutes listed below.
4.1 Draft Minutes of the January 18, 2017 Board Meeting*
4.2 Draft Minutes of the February 2, 2017 Finance Committee Meeting*
4.3 Draft Minutes of the February 2, 2017 Governance committee Meeting*
- 5:15 5. Receive comments from members of the public on “Items not on the Agenda”**
- 5:20 6. Development/Philanthropy Report & Committee Update – Ray Cancino**
- 5:25 7. Program Presentations:**
7.1 HR – Julie Gilbertson
7.2 Elderday – Lois Sones
7.3 FRC- Yolanda Henry
- 6:10 8. Agency Business – Ray Cancino**
8.1 Fairgrounds
8.2 Strategic Planning
8.3 Board Development
- 6:40 8. Finance Committee Update – Cathy Benson**
8.1 Line of Credit Renewal
- 6:45 9. Written Reports**
9.1 Financial Reports from the February 2, 2017 Finance Committee Meeting
9.2 January 2017 Philanthropy Report
9.2 Community Bridges Program Reports – HR, CACFP, CDD, ED
- 6:50 10. Newspaper Articles**
- 6:55 11. Items for Next Agenda**
- 7:00 12. Adjourn Regular Meeting**
- 7:10 13. CLOSED SESSION**
- 7:10 14. Adjourn Closed Session**

Next Meeting:

Wednesday, March 15, 2017

5:00 PM to 7:00 PM

Location: Elderday 100 Pioneer



BOARD OF DIRECTORS

Wednesday, January 18, 2017

5:00 PM to 7:00 PM

Elderday: 100 Pioneer Street, Santa Cruz, CA 95060

AGENDA

Members Present: Rebecca Fowler, Jordan Ciliberto, Shannon Brady, Pam Fields, Jack Jacobsen, Jorge Méndez, Heather Lennart, Sara Siegel, Kenn Barroga, Sabra Reyes.

Members Excused: Martín Bernal.

Staff in Attendance: Ray Cancino, Seth McGibben, Cathy Benson, Julie Gilbertson, Libby Morain, Tonje Switzer.

Guest: Casey Wu

Minutes: Tonje Switzer

4:30 Dinner

5:07 1. Rebecca called the meeting to order. Quorum Established

5:02 2. Agenda Review

Potential CB 40th logo designs were passed around, and the Board was asked to provide feedback. Pam received an advocacy reward for her contributions to the op-ed on Measure D. This was Libby's last board meeting, and the board took the opportunity to recognize her for her outstanding service and contribution to the agency. The MOW Food for the Heart luncheon is on February 3rd, and the Board is encouraged to attend. Libby noted that the agency has reached 73% of year-end philanthropy goal at the half-year mark. Over \$65000 was raised through the Holiday Board Match Campaign, and there is still time for Board members who have not done so to turn in pledge forms.

5:10 4. *CONSENT AGENDA – Action Items

In approving the consent agenda, the Board is approving recommendations within each committee's minutes listed below.

4.1 Draft Minutes of the November 16, 2016 Board Meeting*

4.4 Draft Minutes of the January 12, 2016 Finance Committee Meeting*

Pam and Sara moved to approve the consent agenda as presented. MSP

- 5:12** Prospect board member Casey Wu introduced himself to the board, and mentioned that he is a Watsonville local and works in global accounting for Driscoll. Casey is especially interested in working with programs that help support youth.
- 5:15 5. Receive comments from members of the public on “Items not on the Agenda”**
None.
- 5:20 6. Presentation of 15/16 Audit – Peter Mersino**
Peter noted that the audit has already passed through the audit committee, and proceeded with a page-by-page explanation of the audit’s components. Clean Audit was presented to the full board.
- *Approval of Agency Audit 15/16 – Action Item**
Jack /Jordan moved to approve the 15/16 audit as presented. MSP
- 5:50 9. Written Reports**
9.1 Nueva Vista Community Resources
9.2 La Manzana Community Resources
9.3 Lift Line
9.4 WIC
9.4 Meals on Wheels
The Board inquired about drop in NVCR services and caseload. Management clarified that drops in services are due, in part, to loss of staff and a change in client demographics. FRC’s are gauging for changes in needs through surveys. The Board expressed interest in reviewing community input and receiving a presentation from FRC management. Management further mentioned that the Agency Survey was sent out to community stakeholder. The deadline for responses is February 1st, and that a report-back will be provided at the next board meeting.
- 5:36 10. Newspaper Articles**
- 5:37 11. Items for Next Agenda**
- 5: 38 12. Adjourn Regular Meeting**
- 5:45 13. CLOSED SESSION**
- 6:57 14. Adjourn Closed Session**

Next Meeting:

Wednesday, February 15, 2017

5:00 PM to 7:00 PM

Location: Elderday, 100 Pioneer Street, Santa Cruz, CA 95060



Finance Committee
Thursday, February 2, 2017
11:00 AM – 12:00PM
Community Bridges Aptos
Draft Minutes

Members Present: Shannon Brady, Jorge Mendez , Casey Wu

Members Excused: Jack Jacobson, Kenn Barroga

Staff in Attendance: Ray Cancino, Tonje Switzer

Notes: Tonje Switzer

11:02 Shannon called the meeting to order/Quorum established

11:02 Agenda Review:

Ray welcomed Casey to the committee.

11:05 CFO Report – Cathy Benson

a) Program Budget Summary Review – December

Total program operations are expected to carry a gain. ED January ADA was 57.9, which follows the expected trend of December and January due to illness and travelling. Cathy clarified that the minimum ADA required to break even is 65, but that this number fluctuates depending on available funding and wage increases. Redwood Mountain's opening date is projected to mid-March and the teacher position has been posted.

b) Financial Statement Review –

December is healthy, and there is no anticipation of needing to borrow this month.

c) Cash Flow and Line of Credit – Update

Purchase agreement is likely to be signed by the end of the week, and we should be in escrow by the beginning of next week.

d) Investment and Endowment - Discussion

A meeting was held with Kenn, Cole Strickland of LPL, Ray and Cathy on 1/26/17. There was discussion about alternative investment vehicles, such as ladder Treasury or Corporate Bonds, and the impact of those options relative to the agency's risk tolerance, the desire to preserve the agency's capital, and the necessity of maintaining cash fluidity. The benefits and costs associated with investing in a single stock or bond as opposed to investing in mutual funds was also discussed. The committee further discussed the importance of keeping investments socially responsible, and concluded that proceeding with investments as previously decided is advised.

11:38 Items for Next Agenda

11:40 Adjourn

Next Meeting:
Thursday, March 2, 2017
11:00AM – 12:00PM



Governance Committee

Thursday, February 2nd, 2017

12:00PM – 1:00PM

Community Bridges (CB), Aptos

DRAFT MINUTES

Members Present: Rebecca Fowler, Pam Fields

Members Excused: Jordan Ciliberto, Shannon Brady

Staff in Attendance: Ray Cancino, Seth McGibben, Tonje Switzer

Notes: Tonje Switzer

12:07 Meeting to order

12:08 Agenda Review

12:08 CEO Report – Ray Cancino

1) CACFP Audit

Management reported a few findings of no material consequence due to non-compliances from providers, who were cited in the audit. Agency response will be to increase training to providers to help achieve full compliance.

3) CACFP / Development Director Resignations

Management shared that both had made a correlation between salary and the local cost of living. While in reality CB pays more than other non-profits, the resignations results from a cost/benefit analysis between working here and another geographic location with a lower cost of living.

4) Hiring Committee

Management asked for a few board members to assist with the hiring committee, during two four-hour segments. Pam will do one of them.

5) Board Development

Management noted that there has been low board attendance at events and staff functions, and that that staff has expressed concern about this issue. Management expressed that one BOD member for each CB event is needed. The board is in need of two more members. This was followed by a brief discussion where the value of adding Board Development as a monthly agenda item to the Governance Committee Agenda

was expressed. A recommendation was presented to identify a new board member with policy and politics experience.

6) Board Committee Discussion

Pam will take over the chair position on the Personnel committee, and Sabra will be asked by the board chair to join the Personnel and Philanthropy committees. Heather will be asked by the board chair what times she can make, and be matched with a committee that will work for her. Sara will be asked to join the Philanthropy committee by the board chair.

7) Board Agenda

-Analyzed results of the Agency Stakeholder Survey

-Closed Session on facilities

There was a discussion concerning the CORE funding applications, and management clarified that the proposals are due on 2/6, and that decisions are made of panels that will decide both City and County funding from one RFP. Programs who gets no, or inadequate, funding are given the opportunity to contest the decision through the submittal of a letter during a one-month period in April. Allocation amounts will be public and the final decision will be made on May 15, which allows only 1.5 months to close programming if necessary. Cuts in funding specifically threaten the operations of CDD and Elderday as well as the FRC's. Watsonville and Capitola will re-evaluate their funding strategy after CORE allocations are granted.

12:30 Meeting adjourned

Next Meeting: Thursday March 2nd, 2017

12:00 – 1:00PM

Community Bridges, Aptos

COMMUNITY BRIDGES										
Program Budget Summary										
December 31, 2016										
Projections for Year Ending 6-30-17										
A	B	C	D	E	F	G	H	I	J	K
PROGRAM NAME:	6/30/16 Audited Balance	Annual 16/17 Balanced Budget	Current Projected Expenses	Current Projected Revenues	As Yet Unsecured Revenues	(E-D) Net 2016-2017 Gain/Loss	(B+G) Cumulative Gain/Loss	Goal 25% Reserve %	Change from Prior Mo	14.5% Gen'l & Adm Exp
WIC (Oct-Sept FFY)	151,472	2,428,916	2,419,292	2,431,452	2,500	12,160	163,632	6.8%	2,791	287,752
Child Development Div	2,584	2,056,529	1,995,809	2,007,525	71,806	11,716	14,300	0.7%	11,836	290,300
Elderday	(189,642)	2,011,415	1,925,828	1,992,659	169,918	66,831	(122,811)	-6.4%	(17,275)	279,036
Meals on Wheels	413,880	1,671,973	1,664,940	1,678,040	135,270	13,100	426,980	26.6%	(3,838)	223,286
Lift Line	(139,942)	1,406,202	1,547,907	1,562,209	229,712	14,302	(125,640)	-10.6%	2,976	164,996
La Manzana Commty Res	51,210	658,099	646,230	670,031	23,072	23,801	75,011	11.6%	886	87,472
Mountain Commty Res	175,850	388,753	367,058	381,566	29,100	14,508	190,358	51.9%	(97)	53,223
Nueva Vista Commty Res	54,878	382,560	345,535	345,078	9,762	(457)	54,421	15.7%	(3,548)	47,920
Live Oak Commty Res	98,063	279,916	290,419	301,008	24,637	10,589	108,652	37.4%	3,185	41,510
CACFP (Oct-Sept FFY)	(7,839)	3,732,690	4,112,062	4,099,191	2,475	(12,871)	(20,710)	-30.5%	-	35,019
Administration	60,215	1,579,635	1,561,829	1,550,246	6,500	(11,583)	48,631	3.1%	1,343	2,480
Philanthropy	52,994	138,491	134,892	132,857	17,079	(2,035)	50,959	37.8%	(6,233)	19,559
TOTAL PROG OPERATIONS	723,723	16,735,179	17,011,801	17,151,862	721,830	140,061	863,784	6.86%	(7,974)	1,532,553
LOCRCapital Campaign	380,288	47,097	22,612	35,745	40,273	13,133	393,421	NA	(9,447)	588
Nueva Vista Prop. Equity	200,694	-	0	0	0	-	200,694	NA	-	0
Fixed Assets & Gen'l Agy	656,551	-	415	2,794	0	2,379	658,929	NA	-	0
TOTAL AGENCY	1,961,257	16,782,276	17,034,828	17,190,401	762,103	155,572	2,116,829	6.86%	(17,421)	1,533,141

Note: MOW : \$350,000 of MOW Endowment revenue shown on Fixed Assets & General Agency 6/30/16 Fund Balance.

Note: LL : \$350,000 of prior year LL losses included in Fixed Assets & General Agency Fund Balance.

Note: Familia Property Value of \$200,694 moved to Equity from Income.

** Fixed Asset purchases and Pass-Thru expenses exempt; Admin Program restricted to 5% gain due to Federal restrictions on indirect expenses

COMMUNITY BRIDGES
Program Budget Summary
December 31, 2016

PROGRAM NAME:

WIC	Minimal change
Child Development Div	Delay in RM re-opening, hired site sup working at other sites
Elderday	Drop in Jan ADA
Meals on Wheels	Add position, increased donations \$11K
Lift Line	Minimal change
La Manzana CR	Minimal change
Mountain Commty Res	Minimal change
Nueva Vista CR	Reorganized staffing
Live Oak CR	On-call Aides working less than projected
CACFP	No analysis Dec
Administration	Minimal change
Philanthropy	Recognize Bd Match P-T to programs, add IT
LOCR-Cap Campaign	Stock value fluctuation
Nueva Vista Property	Gain in equity since original acquisition and merger w/CB
FAS & Agy Unrestr.	Fiscal Sponsorships, Unallowable exps, Fixed Asset values

Community Bridges Agency-Wide Revenue and Expenses December 31, 2016										
DESCRIPTION	RECEIVED		EARNED		A/R		UNEARNED	DESCRIPTION	ACTUAL	
	YTD 12/31/16	YTD 12/31/16	YTD 12/31/16	% OF TOTAL	YTD 12/31/16	YTD 12/31/16			YTD 12/31/16	% OF TOTAL
REVENUE								EXPENSE		
County of Santa Cruz	676,535	724,867	8.7%		48,332			Salaries & Wages	3,042,647	38.7%
City of Santa Cruz	56,750	119,250	1.4%		62,500			Payroll Taxes	363,652	4.6%
City of Capitola	56,662	56,662	0.7%				1	Health Insurance/Retirement	439,684	5.6%
City of Scotts Valley	2,293	4,586	0.1%		2,293			Contracted Services	164,385	2.1%
City of Watsonville	9,989	9,044	0.1%				945	Transportation Services	203,985	2.6%
AAA-Title IIIB/C	269,614	329,925	3.9%		60,311			Staff Travel	20,381	0.3%
USDA-AAA / CAFB / SL	60,642	123,187	1.5%		62,545			Occupancy Expense	497,729	6.3%
Dept of Health Svcs-WIC / Snap Ed	616,768	1,199,747	14.3%		582,979			Office/Program Expense	250,422	3.2%
Dept of Educ-CACFP Admin	136,770	198,779	2.4%		62,008			Staff Training	11,099	0.1%
Dept of Educ-CACFP Homes Passthru	2,193,530	2,200,240	26.3%		6,710			Insurance	86,000	1.1%
Dept of Educ-CACFP Ctrs CCC / CBAS	30,932	72,303	0.9%		41,371			Taxes, Licenses, Interest & Fees	36,767	0.5%
Dept of Education-CDD	755,266	647,749	7.7%				107,517	Equipment Expense	83,778	1.1%
Transportation Development Act	373,071	334,273	4.0%				38,799	Raw Food and Related	278,673	3.5%
EFSP (FEMA)	0	4,595	0.1%		4,595			Vehicle Operations/Maintenance	54,484	0.7%
Covered CA-Navigator	7,847	10,651	0.1%		2,804			Payments to CACFP Homes/Ctrs	2,231,172	28.4%
FTA Section 5310 - Cal Trans Veh	0	39,978	0.5%		39,978			Payments to Other Agencies	32,914	0.4%
FTA Section 5310 - Cal Trans Ops	0	42,000	0.5%		42,000			Fixed Asset Purchases	23,594	0.3%
First Five	114,039	135,595	1.6%		21,556			Vehicle Related Purchases	41,725	0.5%
Foundations & Other Grants	245,685	161,417	1.9%				84,269	Depreciation/Amortization	-	0.0%
Donations/Fundraising	460,096	459,826	5.5%		-		270			
Participant Contributions	45,028	45,028	0.5%		-					
Client Fees	200,114	200,114	2.4%		-					
Medi-Cal Fees	714,585	828,245	9.9%		113,660					
Program Income-Other	55,876	107,206	1.3%		51,330					
Transportation Fees/Scrp	8,511	8,511	0.1%		-					
Outside Contracts	34,459	54,463	0.7%		20,004					
Uncollectible Revenue	0	0	0.0%		-					
Interprogram Revenue	249,249	249,249	3.0%		-					
TOTAL REVENUE	7,374,307	8,367,485	100.0%		1,224,977		231,799	TOTAL EXPENDITURES	7,863,092	100.0%
								Net Gain (Loss)	504,393	
								Prior Yr Reserves	1,961,257	
								Net Assets:	2,465,650	
Change from last month	77,250	<December donations								

Community Bridges
Statement of Financial Position
December 31, 2016

ASSETS	Unrestricted		Temporarily Restricted	Temporarily Restricted	Endow Restricted	TOTAL
			Capital Campaign	Escrow	Net Assets	
Cash and cash equivalents	955,672	-	193,500	27,500	1,176,672	
Cash reserved for LOFRC Facility Maint	-	388,326	-	-	388,326	
Accounts/Grants receivable	1,728,842	-	-	-	1,728,842	
Prepaid expenses	134,141	-	-	-	134,141	
Inventory - Raw Food & Supplies	16,000	-	-	-	16,000	
Refundable Deposits	55,223	-	-	-	55,223	
Property and equipment	630,784	-	-	-	630,784	
Leasehold improvements	45,639	-	-	-	45,639	
TOTAL ASSETS	3,566,301	388,326	193,500	27,500	4,175,627	
LIABILITIES						
Accounts payable	252,583	-	-	-	252,583	
Salaries and wages payable	195,602	-	-	-	195,602	
Payroll taxes payable	91,994	-	-	-	91,994	
Retirement (401k) benefits payable	14,129	-	-	-	14,129	
Accrued vacation salaries and wages	250,335	-	-	-	250,335	
Health insurance payable/withheld	6,095	-	-	-	6,095	
Short term debt (includes LOC)	-	-	-	-	-	
Long term debt	-	-	-	-	-	
Volunteer Center liability	-	3,230	-	-	3,230	
Capitalized leases payable	71,174	-	-	-	71,174	
Due to fixed asset fund	-	-	-	-	-	
Unearned revenue/advances	279,180	-	-	-	279,180	
Other debts	246	-	-	-	246	
Other liabilities	545,411	-	-	-	545,411	
TOTAL LIABILITIES	1,706,747	3,230	-	-	1,709,977	
Fund Balance June 30, 2016	1,369,803	380,954	183,000	27,500	1,961,257	
Current Year Income (Loss)	489,752	4,142	10,500	-	504,393	
TOTAL NET ASSETS	1,859,555	385,095	193,500	27,500	2,465,650	

	G	M	Current Month	Last Month	Goals	Req Ratios
Cumulative Net Gain (Loss):	↑	↑	504,393	427,143	\$200,000	
Liquidity Ratio (Unrestr Cash/Total Liabilities):	↑	↑	0.56	0.35	3.0	
Current Ratio (Current Assets/Current Liabilities):	↑	↑	2.6	2.6	2.2	1.6
Modified Current Ratio (Liabilities include advances):	↑	↑	2.1	2.1	1.7	
Net Asset Ratio (Total Assets/Total Liabilities):	↑	↑	2.4	2.5	1.9	
Debt to Equity (Total Liabilities/Total Fund Bal):	↑	↑	69%	69%	109%	
Debt to Assets (Total Liabilities/Total Assets):	↑	↑	41%	41%	52%	
Return on Reserves:	↑	↑	20.5%	17.9%	8.1%	
Current Assets (excludes property/fixed assets):			3,499,204	3,357,387	3,300,000	
Current Liabilities (excludes long term/unearned):			1,356,393	1,292,548	1,510,000	
Modified Current Liabilities (adds in unearned):			1,635,573	1,570,482	1,960,000	

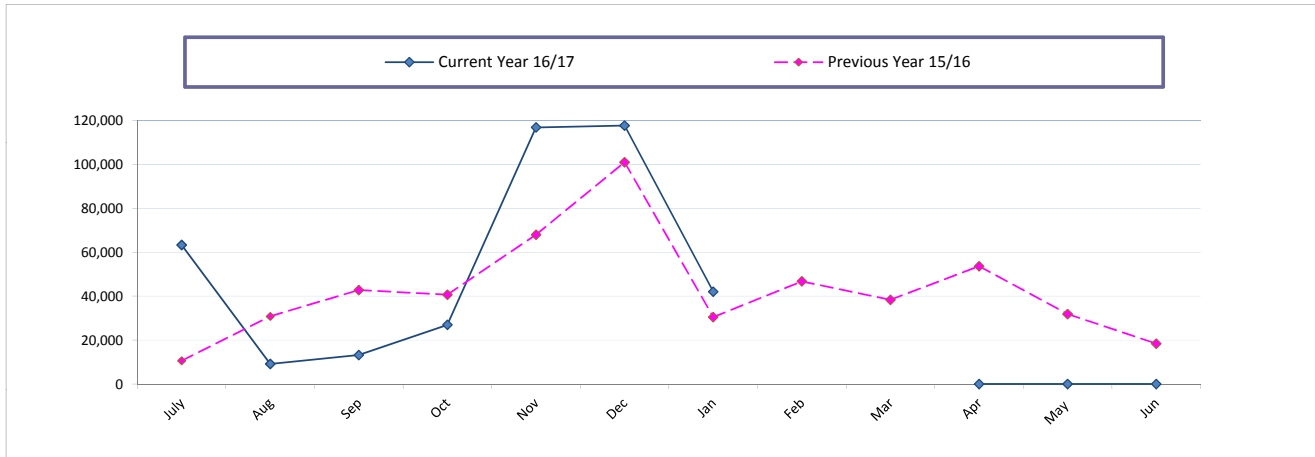
Philanthropy Progress Report

Donations for FY 2016-17

February 15, 2017

A. Donations (Includes all gift amounts. Excludes unreceived pledges)

Total amount of all donations	Fiscal Calendar	July	Aug	Sep	Oct	Nov	Dec	Jan	Feb	Mar	Apr	May	Jun	YTD*
	Current Year 16/17	63,287	9,147	13,174	26,907	116,765	117,591	41,996						388,866
	Previous Year 15/16	10,602	30,783	42,721	40,632	67,919	100,926	30,447	46,709	38,310	53,601	31,818	18,346	512,814



*** Notes on donation figures above:**

This time last year, we were at \$324,029

B. Grants:

We've received the following grants so far this fiscal year (not included in the philanthropy numbers):

\$ 150,000	from Sunlight Giving for Community Bridges
\$ 50,000	from Community Foundation Santa Cruz County
\$ 40,000	from Monterey Peninsula Foundation for Lift Line
\$ 45,000	from Packard Foundation for NVCR Youth activities
\$ 19,605	from Central CA Alliance for Elderday Equipment
\$ 15,700	from Central CA Alliance for Elderday Technical Assistance
\$ 12,000	from Community Foundation Monterey County for LMCR
<hr/>	
\$ 332,305	

C. Accomplishments

- Farm to Fork Gala Dinner raised \$56,339, including \$15,000 from 75 new contacts.
- MCR Mountain Affair scaled back expenses and raised \$14,000 and sold 75 tickets.
- Giving Tuesday raised \$20,691, exceeding our goal of \$12,000, from among 85 donors.
- Holiday Match raised \$65,848 total, an increase of 70% over last year, from 350 donors.
- Google AdWord increases directly attributed to \$11,703 from 54 donors, 80% new to CB.
- 4th Annual Food from the Heart raised \$40,555, including \$11,335 from 33 new donors.

D. Challenges

- Multiple campaigns and grant proposals in process simultaneously, with limited staff.
- Development Director recruitment and interviews underway during month Jan 26- Feb 21.

**Philanthropy Goals
2016 – 2017
Progress Report
February 15, 2017**

**61%
%YTD**

	16/17 Goal	Year To Date	Goal met %
CB*	\$126,500	\$107,633	85%
CACFP	\$3,150	\$7,720	245%
CDD	\$6,000	\$8,902	148%
Elderday	\$19,050	\$12,424	65%
LMCR	\$1,100	\$7,212	656%
LL	\$17,600	\$12,056	69%
LOCR	\$15,000	\$20,426	136%
MCR	\$57,700	\$35,172	61%
MOW	\$206,706	\$162,553	79%
NVRC	\$16,100	\$10,906	68%
WIC	\$1,500	\$3,861	257%
TOTAL	\$470,406	\$388,866	83%

*Less \$15,898 YTD moved to programs from unrestricted Farm to Fork and Giving Tuesday gifts.

2016-17 Appeal Results
February 15, 2017

Sum of Amount	.												
Row Labels	Jul '16	Aug '16	Sept '16	Oct '16	Nov '16	Dec '16	Jan '17	Feb '17	Mar '17	Apr '17	May '17	Jun '17	Total
Annual Report 2015	235	125	100										460
Board donation to CB	50	100	100	3,100	1,350	600	100						5,400
CACFP Flower Gram 17							40						40
Calendar Sponsor 2017			500	1,500	250	1,500	500						4,250
CB Calendar 2017					5,590	25,597	3,985						35,172
CB Endowment			50			65							115
CB Kids Mailer 2016			1,201	3,195	625								5,021
CDD tuition donation	263												263
Donates Monthly	749	574	494	494	694	669	744						4,418
Donor Advised Grant	1,200			500	1,200	23,954	5,500						32,354
Farm to Fork Gala 2016	53,139	1,850	850		500								56,339
Food from the Heart 2016	118	93	93	93	93	93							583
Food from the Heart 2017							20,865						20,865
Founding 100 Endowment	105	105	158	105	135	135	135						879
Friends of MOW Membership	275	25	25	25	65	25	25						465
Fund raising events for CDD				180									180
General Donation 2016	955	740	2,394	3,030	31,705	3,912	4,445						47,181
Gifts Made in Honor	700		50		400	225	15						1,390
Giving Tuesday 2016					18,446	1,500	745						20,691
Lift Line participant survey 2016				255	45	10							310
LL Out of County			80										80
LL Van Sponsorship		1,200	360	660	360	1,710	660						4,950
MCR Makers Market						90							90
MCR Mountain Affair 2016	400	440	1,780	11,232		165							14,017
MCR PAT 2016	135	135	135	135	145	145	145						975
Memorial Donation							50						50
MOW Lautman Fall Mailer 2015		30	25										55
MOW Lautman Fall Mailer 2016				618	50,932	32,970	956						85,476
MOW Lautman mailer welcome packet	120	80	80	130	100	979	581						2,070
MOW Lautman Spring Mailer 2016	2,348	860	480	470	230								4,388
MOW suggested meal contribution	223	418	555	358	448	214	200						2,414
NV Holiday mailer 2016					150	2,300	25						2,475
NV Mother's Day 2016	100												100
Online donation/Internet search					1,968	8,725	1,010						11,703
Outside Fundraiser			1,117		565								1,682
Payroll Deduction - Employee	343	343	515	343	343	343	343						2,573
Payroll Funds - non-CB	408	474	715	183	365	3,345	927						6,416
Personal appeal to individual donor						8,000							8,000
Program Donation Box	146	53	57	71	61	320							708
Redwood Mountain Faire			1,260										1,260
Restaurant Fundraiser				231									231
Roots & Wings		575											575
Veena & Sandeep's Wedding 2016	1,275	927											2,202
(blank)													
Total	63,287	9,147	13,174	26,907	116,765	117,591	41,996						388,866

2017 Food from the Heart

Matching Funds	10,000
Event sponsors	7,000
Ticket purchases	5,730
Donation pre-event	275
Donation at event	500
Live Auction	4,400
Fund-A-Need	12,250
Donation Cards	400
Total Revenue	40,555

Expenses	13,370
Net revenue	27,185

Incr. compared to 2016	(3,999)
Actual 2017 increase*	11,001

2016 Food from the Heart

Matching Funds*	20,000
Event sponsors	8,500
Ticket purchase	5,468
Donation pre-event	1,343
Donation at event	6,113
Raffle Napa	1,550
Raffle Jamaica	810
Valentine purchases	300
Total Revenue	44,084

Expenses	12,900
Net revenue	31,184

Incr. compared to 2015	7,322
Actual net revenue	16,184

*Originally \$20,000 match
but only \$5,000 received.

PROGRAM REPORT to BOARD of DIRECTORS

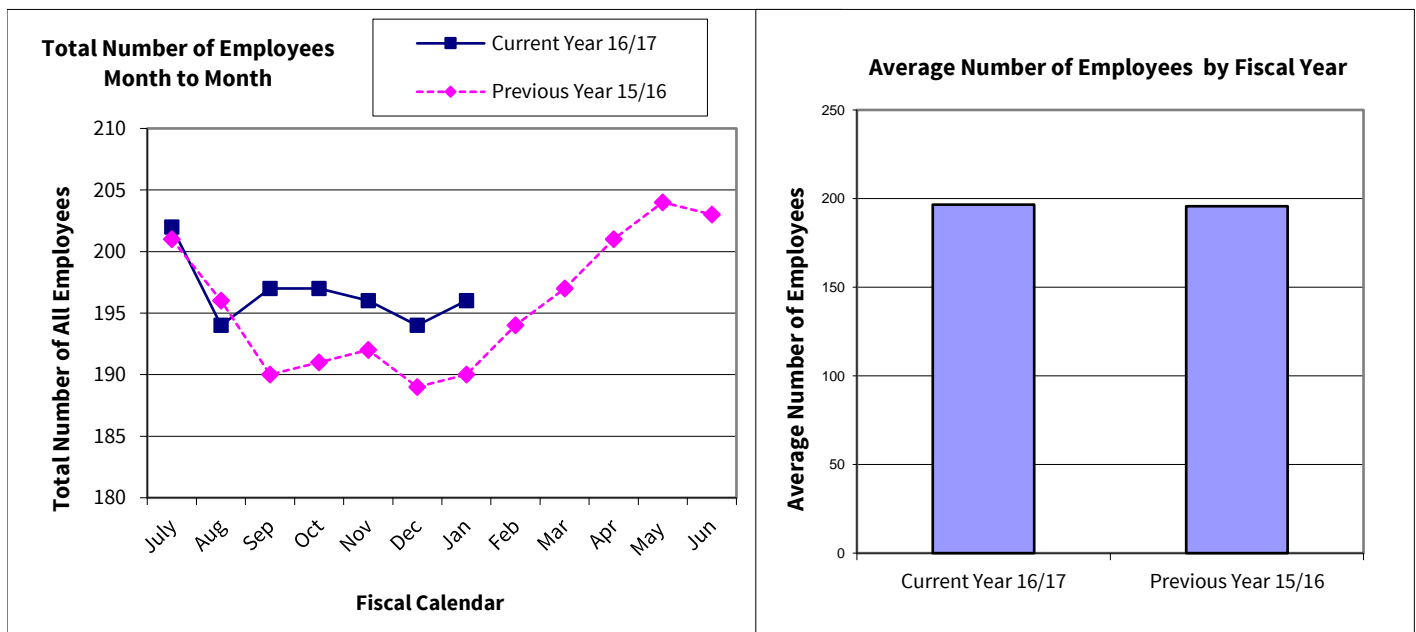
Program Name: Admin/HR Department

Date of Board Meeting: February 15, 2017



A. Services: Health & Safety, Workers Comp, Program Support, Benefits, Personnel Issues, 401(k), Union Work, Employment Verifications, Criminal Background Checks, Bilin./Bili Testing, Orientations.....

Total number of all employees	Fiscal Calendar	July	Aug	Sep	Oct	Nov	Dec	Jan	Feb	Mar	Apr	May	Jun	Average
	Current Year 16/17	202	194	197	197	196	194	196						197
	Previous Year 15/16	201	196	190	191	192	189	190	194	197	201	204	203	196
	Terms 16/17	7	9	1	3	2	3	2						4
	Turnover Rate % 16/17	3.5%	4.6%	0.5%	1.5%	1.0%	1.5%	1.0%						1.96%



B. 2016-2017 FMLA/WC Report:

Fiscal Year 16-17	July	Aug	Sep	Oct	Nov	Dec	Jan	Feb	Mar	Apr	May	Jun	AVG
Number of EE's on FMLA	9	7	8	10	11	10	7						9
Number of new WC Claims	0	1	0	2	0	0	1						0.571428571
Number of new First Aid Claims	0	1	0	1	0	0	0						0.285714286

C. Accomplishments: January marks the annual implementation for renewal and changes for employees with their health care benefits selection and our 401k Plan contributions. The HR Team, along with payroll and fiscal depts, processed salary increases for all employees, as well as some reclassification and reorganization changes. Labor Law updates are also implemented in January of each year. Julie completes the annual MIS Drug and Alcohol Testing reports and passed the CHP audit for that program and records. We are also working on the 401k- 5500 testing work in preparation for the annual audit. There are several recruitments currently in CDD, CACFP, Elderday, FRC, Lift Line and MOW. The HR Team is busy with interviews and new employee orientations.

D. Challenges: Balancing the large, ongoing workload. Meeting the demand of so many project deadlines and HR tasks, while addressing walk-ins and unplanned assistance. As always we are happy to be able to offer resources, support and assistance to staff when needed.



CACFP Research

Did you know?

- Nearly two million California children regularly spend time in child care.
- On average, children spend 35 hours a week in child care, eating 50% or more of their caloric intake while in care.
- Sites that participate in the CACFP have been found to serve more fruits, vegetables, milk, and meat/meat alternatives, and fewer sweetened beverages and other sweets and snack-type items as compared to non-CACFP sites (Childhood Obesity, June 2012, Vol. 8, #3).
- Barriers to providing nutritious foods include: high costs and lack of training.

CACFP at a Glance

In the past year (October 2015-October 2016):

- Our staff of five has conducted 1,323 home visits, >20 Center and Adult Day Care visits.
- Provided approximately 1500 hours of contact & training.
- Staff has reviewed ~5,000 menus.
- We have reimbursed a total of 2 million healthy children's meals, ~30,000 Adult Day Care meals.
- Returning approximately \$4 million back into our communities.
- Web- increase from 80 to 112 online claimers of 430. Web training continues to grow. Launching

- Transitioned to Meals on Wheels for food with Elderday (Nov. 1st 2015). Participants are really happy with the quality of the food being provided.

Opportunities for growth:

- Providing early childhood education for Family Child Care Home Providers.
- Gardening for Family Child Care Homes to increase access to locally grown fruits/vegetables.
- Increasing Physical Activity focus to Family Child Care Homes & Centers.

How you can get involved?

- Volunteer at one of our upcoming workshops.
- Help us create content for our monthly newsletters & facebook content.
- Help us coordinate early childhood education event(s).



PROGRAM REPORT to BOARD of DIRECTORS

Program Name: Child & Adult Care Food Program

Date of Board Meeting: February 2017

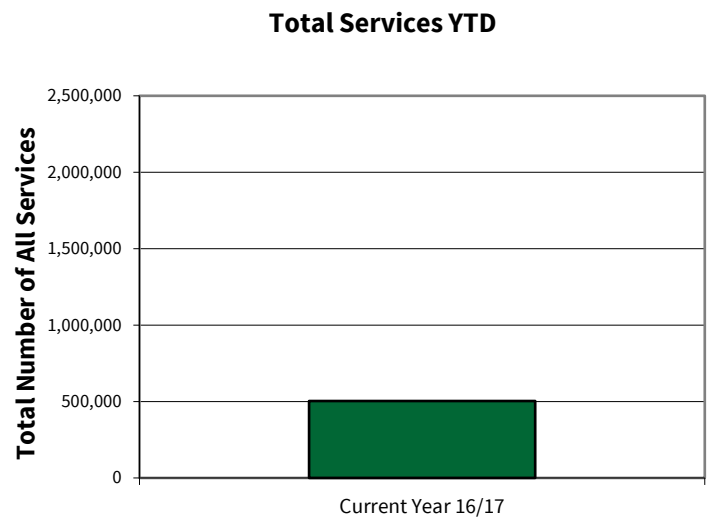
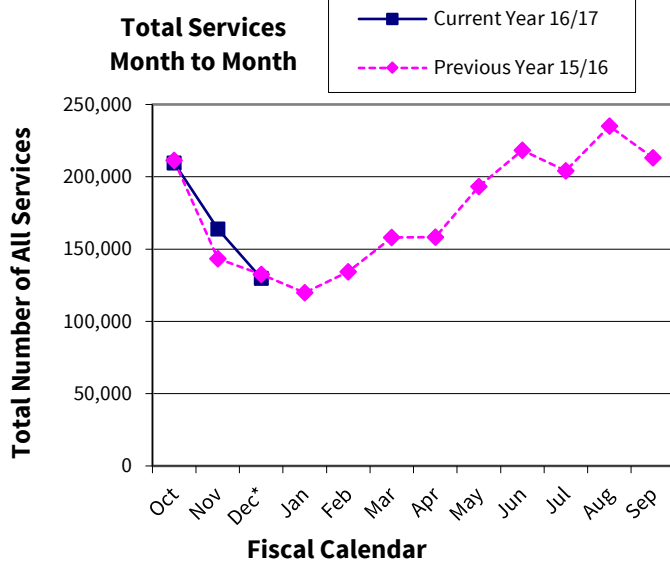


**Child & Adult Care
Food Program**

A. Services: The CACFP child care component is a state and federally funded nutrition assistance program designed to provide healthful meals to children and adult receiving day care. Along with improving the diets of the participants through nutritious well-balanced meals CACFP also provides on going up-to-date nutrition, health, and safety education materials.

Total # of all services	Fiscal Calendar	Oct	Nov	Dec*	Jan	Feb	Mar	Apr	May	Jun	Jul	Aug	Sep	YTD
	Current Year 16/17	209,486	163,941	129,836										503,263
	Previous Year 15/16	211,216	143,278	132,567	119,790	134,297	157,925	158,194	193,234	218,340	204,087	235,017	213,120	2,121,065

*December 2016 claim month has not been closed out, therefore actual number of meals is not reflected



B. 2015-2016 Volunteers Report:

Fiscal Calendar (15-16)	Oct	Nov	Dec	Jan	Feb	Mar	Apr	May	Jun	Jul	Aug	Sep	YTD
# of Duplicated Volunteers	1	1	1	1									4
# of Unduplicated Volunteers	0	0	2	0									2
# of Volunteered Hours	8	7	14	9									38

C. Accomplishments:

- 1) New position of Program Coordinator starting Mid. January @ 30 hours
- 2) All staff back from leaves
- 3) Successfully completed internal and state audits
- 4) Roundtable Advisory Committee pressuring state to recognize licensing communication issues and neg. fiscal impact

D. Challenges:

- 1) CACFP no longer has an Executive Assistant - moved to WIC
- 2) Neg. Fiscal impact from incomplete licensing data with provider closure in September - discovered in November

PROGRAM REPORT to BOARD of DIRECTORS

Program Name: Child & Adult Care Food Program

Report by Centers

Date of Board Meeting: February 2017



**Child & Adult Care
Food Program**

CDDs

	Fiscal Calendar	July	Aug	Sep	Oct	Nov	Dec	Jan	Feb	Mar	Apr	May	Jun	YTD
Total meals reimbursed	Current Year 16/17	5481	5951	5534	5684	5275								27,925
	Previous Year 15/16	5966	5909	6200	6667	5409	3840	5163	5928	6398	6237	6235	6271	70,223

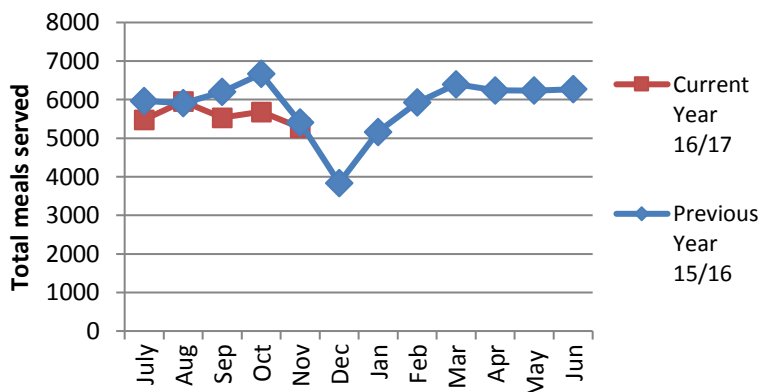
At-Risk Site

	Fiscal Calendar	Sep	Oct	Nov	Dec	Jan	Feb	Mar	Apr	May	YTD
Total meals reimbursed	Current Year 16/17	176	318	247							
	Previous Year 15/16	241	1189	923	882	851	863	1110	869	918	7,846

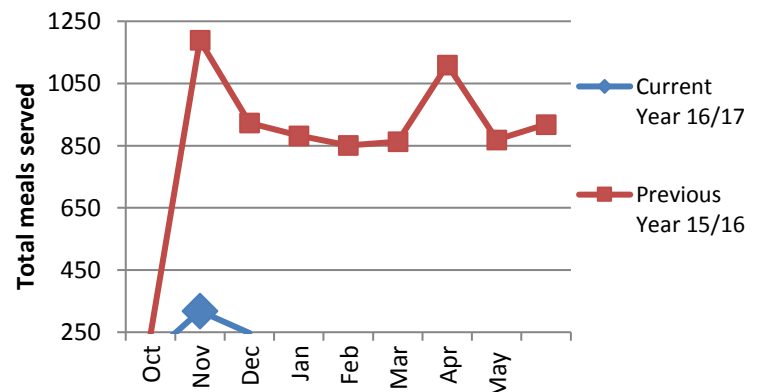
Elderday

	Fiscal Calendar	July	Aug	Sep	Oct	Nov	Dec	Jan	Feb	Mar	Apr	May	Jun	YTD
Total meals reimbursed	Current Year 16/17	2469	2971	2991	2818	2784								
	Previous Year 15/16	2890	2709	2490	2710	2131	2503	1798	2321	2628	2437	2471	2898	29,986

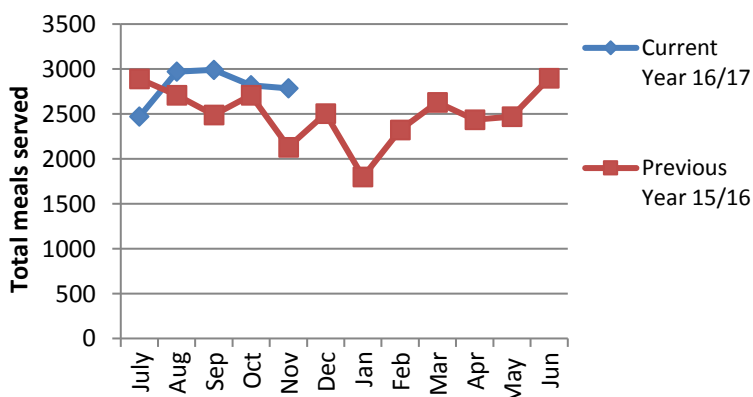
CDDs



At-Risk Site



Elderday



Accomplishments:

- 1) New Program Coordinator to operate 4 CDDs and At-Risk to better streamline claims processing.
- 2) Elderday increased ADA increasing reimbursement
- 3) CDD & CACFP developed new Lunch Cycle Menus - launch TBD

Challenges:

- 1) Boys and Girls Club no longer approved as CACFP site
- 2) New Meal Pattern - pending State approval to launch
- 3) Low enrollment at CDDs
- 4) Redwood Mnt. still closed

CDDs include: Fairgrounds, Nuevo Dia, Redwood Mountain, Sycamore Street & Vista Verde centers.

At-Risk Site only operate October—May.

Accomplishments

- We have had fluctuating, but improved, ADA so far this fiscal year. With the budget planned on a conservative ADA of 65, we have been fine weathering the expected decrease in December and January attendance. At the end of January, our attendance for the year was still at 67. We have had many participants out sick and on vacations, but we have not experienced such an unusually high number of deaths this year as last, so we anticipate a return to significantly higher numbers in the spring.
- We have received some of the new furniture, including activity tables, recliners and love seat and chairs from the CCAH grant. Our participants have been particularly fond of the love seat and recliners. We are expecting the new chairs any day to complete the furniture purchases.
- We have finally filled the part-time LVN position, for which we had been recruiting since August. We welcome Noelle Acosta, LVN, to our team.
- We were also, fortunately, able to quickly fill the Social Work Assistant position when our newest Social Work Assistant left to pursue a higher paying job. We also welcome Carlos Mendez to the team. Everyone is thrilled with his singing and guitar prowess, as well as his social work skills!

Challenges

- We continue to struggle with low pay scales for most professional positions (particularly RN and social work). At this moment, we are fully staffed, however, we know that the question of comparable community pay rates will continue to arise.
- We must continually focus on outreach to keep our attendance numbers up. With continued outreach, we are optimistic that we will complete this fiscal year above our budgeted number for ADA.
- There are two major fiscal concerns at the moment. First, is whether our \$150,000 Santa Cruz County grant will be renewed under the new County CORE grant process, and what it could mean if we don't receive it. Second is the potentially bigger and more volatile issue of the ACA and what happens to it in the face of federal policy and changes under the current administration. If the ACA is severely curtailed, CCAH, and therefore Elderday, stands to lose a significant portion of their members. We will need to wait to hear about both of these issues, but we are considering how we could move forward in the face of either or both of these taking place.
- Continuing challenge from last report: More frail and medically-complex participants continue to tax staff. We are working on finding ways to deal with this "new normal" of more medically-complex participants, arriving later in their disease progression, and having shorter overall stays at Elderday.

PROGRAM REPORT to BOARD of DIRECTORS



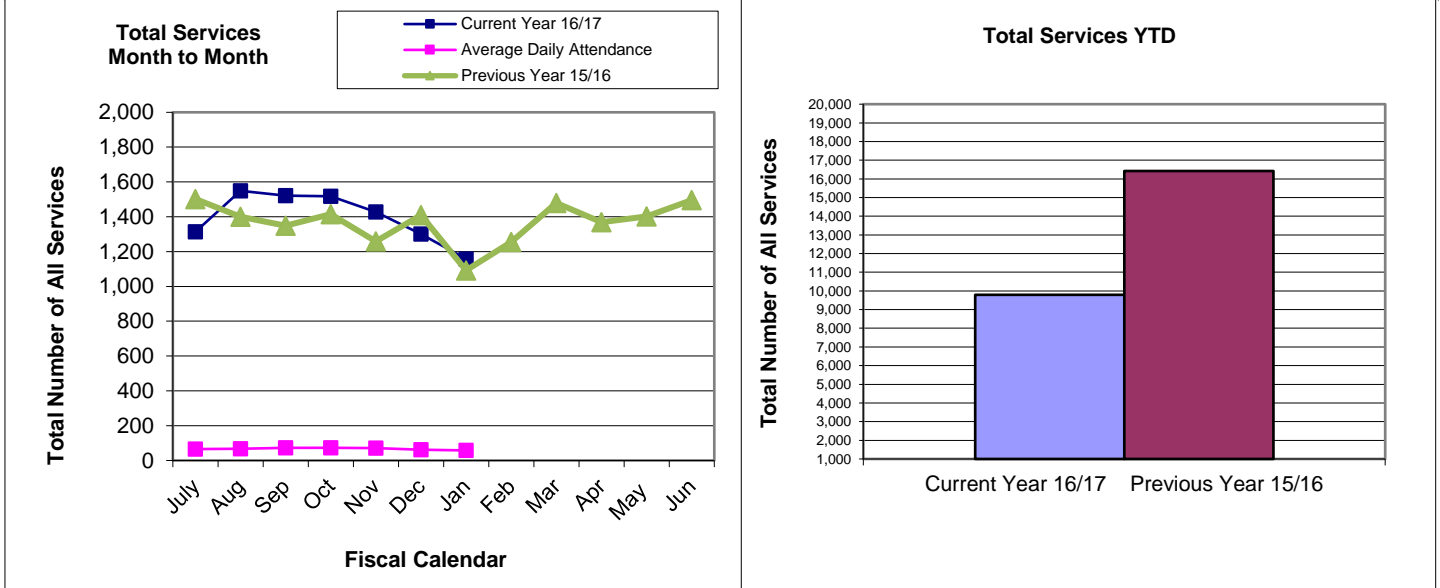
ELDERDAY
ADULT DAY HEALTH CARE
COMMUNITY BRIDGES
PUENTES DE LA COMUNIDAD

Program Name: Elderday

Date of Board Meeting: 02/

A. Services: Service Units represent total number of service days provided to duplicated participants.

Total number of all services	Fiscal Calendar	July	Aug	Sep	Oct	Nov	Dec	Jan	Feb	Mar	Apr	May	Jun	YTD
	Current Year 16/17	1,313	1,549	1,522	1,517	1,427	1,300	1,158						9,786
	Average Daily Attendance	65.65	67.35	72.48	72.2	71.4	61.9	57.9						67.00
	Previous Year 15/16	1,502	1,400	1,348	1,415	1,258	1,410	1,092	1,255	1,480	1,369	1,401	1,495	16,425



2015-2016Volunteers Report:

Fiscal Calendar (16-17)	July	Aug	Sep	Oct	Nov	Dec	Jan	Feb	Mar	Apr	May	Jun	YTD
Number of Duplicated Volunteers	87	70	36	115	99	67	57						531
Number of Unduplicated Volunteers	63	36	27	78	28	41	43						316
Number of Volunteered Hours	276	161	121	213	329	135	118						1,353

B. Accomplishments:

See attached sheet.

C. Challenges:

See attached sheet.

Santa Cruz County residents support local causes on Martin Luther King, Jr. Day



Jamie Shaffer, Julie Chiu, and Steffen Betita are part of a team of Plantronics employees planting native plants in a parklet next to the Riverwalk in Santa Cruz on Monday as part of the Martin Luther King Day of Service. (Dan Coyro -- Santa Cruz Sentinel)

By Ula Chrobak, uchrobak@santacruzsentinel.com

POSTED: 01/16/17, 5:19 PM PST | UPDATED: 3 DAYS AGO 0 COMMENTS

Santa Cruz County residents engaged with local organizations to benefit community causes Monday in observance of Martin Luther King, Jr. Day.

During the Day of Service, between 400-500 volunteers participated in about 10 projects throughout the county.

Activities included planting native trees and shrubs, gardening, cleaning up beaches, making Valentine's Day cards for children with cancer and writing letters to social justice advocates. The event was organized by the Volunteer Center of Santa Cruz County, which brought together volunteers at the Santa Cruz Bible Church to start the day with motivational speakers and a video about Martin Luther King, Jr.

"A lot of families and kids are coming, that's what is the most fun about this event," said Christina Thurston, director of volunteer mobilization at the Volunteer Center. "When you volunteer as a kid you're more likely to volunteer in the future. It really just sets the precedent for volunteering and connecting to your community."

Upstairs at the church, volunteers crafted Valentine's day cards for Jacob's Heart — a local nonprofit supporting children with cancer — and Meals on Wheels, a program that provides food to homebound seniors. Put on by the nonprofit Community Bridges, the card-making event is in its fourth year and was led by AmeriCorps member Brittany Friedman, 25.

"People are so creative," Friedman said. "They really put their hearts into [making the cards]."

Nearly 100 people of all ages made cards. For many, like Lizbeth Toro, it was their first time volunteering.

“We got to help out, and these kids will look forward to opening a card on Valentine’s Day,” said Toro, 13, “I feel like it’s something sweet and it will warm up their hearts.”

While many of the projects on the Day of Service have been going on multiple years, members of the Young Writers Program and AmeriCorps founded a new event this year: “Writing Hope into the World.” Hosted at the Diversity Center of Santa Cruz County, the program brought volunteers together to write letters of support to social justice advocates — including both community activists such as members of the local NAACP chapter and nonprofits acting globally.

“What I liked most about this event was it made me think about being thankful and appreciating these activists,” said Ardak A., a UC Santa Cruz student, “It brings about positive energy.” She declined to give her last name.

She had just finished writing a letter to Polaris, a nonprofit working worldwide to stop human trafficking.

“I like the idea of recognizing heroes on MLK day because he’s a real hero for me and so many others,” said Erica Aisha Charves, AmeriCorps member and volunteer coordinator at the Diversity Center.

Community members also worked on a number of projects outside in Santa Cruz’ green spaces and gardens. The Coastal Watershed Council Program gathered volunteers from Plantronics — an audio technology company — to restore the native plants of the San Lorenzo River at the Santa Cruz Riverwalk.

Plantronics employees and their families added about 50 native and drought-tolerant plants near the southwest corner of River and Water streets, creating a “parklet” for the benefit of community members and river ecology.

“We do this to get the community into the Riverwalk, to make it an accessible community asset,” said Alev Bilginsoy, of the Coastal Watershed Council. “It was really fun to meet with new people and talk about the

Advertisement

river as a community asset, and to educate people about the role of the river in the community — for drinking water, as an ecological hub and a hub for the community.”

But MLK Day is not the only day community members can volunteer, said the Volunteer Center’s Thurston.

“These projects continue throughout the year,” Thurston said. “If they didn’t do it today, they can do it any other time.”

ning stories on Bruce Bratton's Universal Grapevine radio program, which airs on Tuesday nights, 7-8 p.m., on KZSC 88.1 FM.

Bringing positivity to the community

Positive Discipline Community Resources (PDCR), a local social change collaborative working for more thriving families, recently inducted Board Directors Valeria Miranda, Laura Valdez, Yolanda Provoste-Fuentes and Theresa Cariño.

Miranda, executive director of the Santa Cruz Art League and a consultant who focuses on facilitating sustainable growth for nonprofits, teaches graduate level art education at the Academy Art University. She also teaches men and women in Santa Cruz County jail facilities.

Valdez is founder of Moviendo Corazones, which provides positive discipline trainings and consulting, particularly on Spanish-speaking initiatives, throughout the country. She emigrated from Mexico to the U.S. in 1994, and is the first Latina to provide the first certification workshop in Spanish "Teaching Parents with Positive Discipline" in 2006 for the Positive Discipline Association.

Provoste-Fuentes is a longtime parent educator at Live Oak Community Resources in Santa Cruz. She is originally from Chile, where she was an elementary school teacher in a poor neighborhood called Region 9 and then at a ru-

Laura Valdez



Yolanda Provoste-Fuentes

ral school in the countryside, leading to a lifetime of child advocacy.

Cariño is founder and executive director of Salud y Cariño, Inc., and has a master's in multicultural education and almost 20 years experience in working with youth in various capacities. Cariño also serves as the organization's lead facilitator for Girls Group, its after-school program for middle school girls.

Earning rank

Claudio Franca Brazilian Jiu Jitsu (CFBJJ) in Santa Cruz recently awarded Black Belt rank to nine long-time

students during the academy's recent promotion ceremony. Master Claudio Franca, a 6th-degree black belt and owner of CFBJJ, awarded Black Belt distinction to: Santa Cruz residents Chris Balthasar, Chris Lang, Justin Bettencourt, Thomas Tupper and Jim Page; Erick Falloa and Joshua Baudour of Prunedale; Eric Matlin of San Jose; and Danny Patalot of Sunnyvale. The newly appointed black belts have been training under Master Franca for a decade, except for Lang, who has been training for 13 years and is the second woman to earn the distinction under Franca's rigorous program.

Births

SUTTER MATERNITY & SURGERY CENTER

Lucero: Dec. 26 at 9:58 a.m., to Laura Ann and Jameson Ross Lucero, Santa Cruz, an 8-pound 2-ounce girl, Genevieve Rose

Rivera: Dec. 26 at 5:42

Julia Teresa

Morabito: Dec. 28 at 12:01 a.m., to Sarah Jane and Gabriel Giovanni Morabito, Aptos, a 7-pound 8-ounce boy, Romah James

Moreno Garcia: Dec. 30

Griffin: Jan. 1 at 1:55 a.m., to Lindsay Rachael and Corey David Griffin, Santa Cruz, a 7-pound 3-ounce boy, Nathan William

Guzman: Jan. 2 at 7:18 a.m., to Anitra Laurel and Robert L. Guzman, Ben Lomond, a 9-pound 4-ounce

nique Leys and Cory Ryan Laborde, Santa Cruz, a 6-pound 4-ounce boy, Elijah Yearsley

White: Jan. 6, 11:21 a.m., to Jaime Patricia and Brian Gregory White, Watsonville, a 6-pound 2-ounce girl, Olivia Iavern



Theresa Cariño



Valeria Miranda

In addition to the black belt promotions, CFBJJ awarded higher belt ranks to more than 400 students, including children and adults, from its Santa Cruz, Watsonville and San Jose academies, and regional affiliates.

Got a story to tell, an event to report, an award to announce? Tell Justine. Email her at sentinelnamedropping@gmail.com.

having fun in the moment, temporarily erases some people's capacity to recall their commitments. It is similar to a child who states that he/she is full after eating part of his/her dinner, yet becomes excited about dessert. Essentially, the responsible adult regresses to a thrill-seeking child whose pleasure supersedes all other considerations.

Grayson Bell, personal finance blogger at Debt Roundup stated, "Some people do not distinguish wants from needs. They use the word 'need' for almost everything they purchase, causing them to actually believe they 'have' to spend the money."

Then there are individuals who are thrill-seekers. These people obtain great pleasure from trips, adventure, exploring other cultures, risking their lives and challenging nature by climbing, bungee jumping, and more. Some of them feel that these pleasures are a "must," and the funds needed for such adventures override any other financial considerations.

This line of reasoning of a borrower may not resonate well with the lender. Financial institutions require a signed commitment from borrowers so they have legal recourse for collecting the money. Family members, friends and acquaintances who lend money as a goodwill gesture may feel disappointed when the borrower faults on his/her commitment and are less legally protected in the event that the borrower fails to comply with the original terms of the loan.

Contact Dr. Offra Gerstein, at 831-476-7666 or visit www.RelationshipMatters.com

A NOTE TO BORROWERS

Understand that the private lender has given you the money out of respect for your needs and trust in your commitment

Planning underway while Santa Cruz County awaits Measure D sales tax revenue



Motorists must negotiate a string of potholes on Freedom Boulevard near Corralitos Road.Dan Coyro — Santa Cruz Sentinel file

By Jessica A. York, Santa Cruz Sentinel

POSTED: 02/02/17, 4:48 PM PST | UPDATED: 6 DAYS AGO [7 COMMENTS](#)

WATSONVILLE >> Though impacts of Santa Cruz County’s new voter-approved “self-help” transportation tax have not yet translated into a bustling regional rail trail or filled-in potholes, Regional Transportation Commission staff members said Thursday that much is going on behind the scenes.

Revenue from the new tax will not begin flowing in to Regional Transportation Commission coffers until July, and the county Elections Office and Board of Equalization will take their cuts of the profit first.

Retail customers countywide will see their sales at the register increase in price by one half of 1 percent beginning in April and continuing for the next 30 years.

With an estimated 10 percent or more of the estimated \$200 million in storm-related damage experienced statewide in recent weeks reported in Santa Cruz County, some local leaders have begun asking if some early fiscal relief might come from the tax’s proceeds, said RTC Executive Director George Dondero

“We’re exploring possibilities on that, we’ve been in discussion with your staff on that,” Dondero told the RTC board. “However, we’d like to caution that you explore those federal and state emergency fund sources first, because, owing to the size of the damage — just for example, the county gets about \$2.5 million a year — you don’t want to borrow too far out into the future to repair today’s storm damage. So, you should proceed carefully on that.”

Local jurisdictions and service providers are not due to receive their portions of the proceeds, set by a formula laid out in the Nov. 8 Measure D ballot measure, until each have approved their own five-year priority projects plan, which will be subject to public comment.

“We’re developing guidelines and agreements with the direct recipient agencies to ensure that the funds increase or expand transportation projects and services and do not simply supplant existing funding,” Dondero said. “At the cities and the county, you will hold public hearings on how that money is to be spent. That will not happen here at the RTC.”

Capitola, Santa Cruz, Scotts Valley, Watsonville, Santa Cruz County, Santa Cruz Metro and Community Bridges will have until June 30 to complete their five-year plans, then need to publicly update the documents annually thereafter, Dondero said. The RTC board will undergo a similar process for large-scale regional projects such as Highway 1 widening, Highway 9 corridor improvements and rail trail work. The RTC board also will need to appoint five community members to a public oversight committee that will be tasked with reviewing how Measure D funds were spent in each previous year. That committee’s creation, while important, is on a back burner for now, said RTC senior transportation manager Karena Pushnik.

The board also heard an update on Segment 7 of the Rail Trail, a 2.2-mile stretch from Natural Bridges Drive to the Municipal Wharf in Santa Cruz. The project expanded from an estimated at \$4.5 million to \$5.3 million and will be broken into two phases while the city seeks additional funding sources.

Advertisement

A2

LOCAL NEWS



Emily Reilly
Ask Emily!
 831.818.6490
 ereilly@baileyprop.com
 Cal BRE#01916723

Friday, January 20, 2017 » MORE AT [FACEBOOK.COM/SCSENTINEL](https://www.facebook.com/scsentinel) AND [TWITTER.COM/SCSENTINEL](https://twitter.com/scsentinel)

santacruz

INAUGURATION WEEKEND

STANDING TOGETHER



SHMUEL THALER — SANTA CRUZ SENTINEL

Watsonville Mayor Felipe Hernandez welcomes hundreds gathered in solidarity to voice a message of defending the rights of the most marginalized in our society at an event called Hands Across the Plaza on Thursday. The organizers stated the purpose of the gathering was to stand together with others across the United States to recognize that our vibrant and diverse communities are the strength of our country.

INAUGURATION

Watsonville high school students to attend inauguration

TRANSPORTATION

New bike p tap for San

TECH

H
ex
a
cr

Goog
prize
hack

By Jo
jgumz
@jond

SANTA
ticipa
Friday
pus fo
athon
"It's
a thir
joring
who i
with 2
scienc
UC
son 1

SCHE

Friday
those
10 p.m

Satur
submi
11 p.m

Sund
first-r
guest
round
annou

Santa Cruz County storm toll reaches \$15 million



Valencia Road is closed at Aptos School Road causing some students at Valencia Elementary to take a 10-mile detour. The road has sunk 12 inches in a week, and the closure will last at least two weeks.Dan Coyro — Santa Cruz Sentinel

By **Jondi Gumz**, Santa Cruz Sentinel

POSTED: 01/24/17, 5:58 PM PST | UPDATED: 2 WEEKS, 1 DAY AGO [5 COMMENTS](#)

SANTA CRUZ >> Unrelenting rainstorms have left about \$15 million in damages in Santa Cruz County, according to assistant public works director Steve Wiesner, briefing county supervisors Tuesday.

Wiesner, subbing for his boss John Presleigh who is on vacation, said he was thankful Gov. Jerry Brown on Monday declared a state of emergency for 50 California counties, including Santa Cruz County.

That is the first step toward getting state assistance and potentially federal emergency funding to repair damaged roads.

“We’re still responding to many slides,” Wiesner said. “Trees are down all over the county. We’re still finding sites today.”

He said sccroadclosure.org will be updated hourly. Another place to find fresh information is the County of Santa Cruz Department of Public Works Facebook page, which has a video of a landslide in action covering Nelson Road in dirt, trees and rocks.

Wiesner said a meeting with Caltrans is scheduled at end of this week to address repairs. The fixes will be done in two phases, first, stabilizing and then permanent restoration.

Boulder Creek Fire Chief Kevin McClish said he worries that Bear Creek Road, a commuter route down to one lane due to erosion, could be lost, halting mail service, garbage pickup, Meals on Wheels volunteers and FedEx deliveries.

“Act quickly to protect the remaining lane,” said McClish, who checks on it daily. “The road shrinks every day.”

Jim Coffis, longtime Ben Lomond resident, called the Bear Creek Road damage “one of the most significant since the 1989 earthquake” and said he was willing to pay more to maintain roads.

Monday afternoon, Valencia Road in Aptos was closed after dropping 12 inches in a week. That prompted a 10-mile detour via Freedom Boulevard for parents of students at Valencia Elementary School for the next two weeks.

“The community needs to understand this is a natural disaster,” said Supervisor Zach Friend, warning it will take time before roads return to pre-storm conditions. “This will be a long-term haul, very expensive for us.”

He applauded people who emailed photos of damage which have been shared with public works crews.

“We need the community to come forward with the information,” Friend said.

Lompico resident Kevin Collins told supervisors how a landslide closed Lompico Road: “Three big firs rode the slide, and one was left straight up as though it were growing there in the middle of the road.”

Property manager Al DeCamara said Bear Creek Road has been down to one lane since 2006 and “that one lane is now threatened.”

Barry Fitzgerald, who lives in the Summit, said the rock slide on Upper Zayante will be expensive but is critical to commuters.

Another speaker said half of Alba Road is gone and Martin Road is sliding into the creek.

Advertisement

Rosemary Anderson, the county’s emergency services manager, said state support was unlikely due to the state budget deficit.

Supervisor Bruce McPherson, who had proposed two weeks ago to prioritize Bear Creek Road repairs, said he wants public works staff to return in two weeks with a priority repair list, an updated damage estimate and how to fund repairs.

That motion passed unanimously, as did a resolution to ratify “continuing existence of a local emergency.”

Aptos thrift shop donates \$275,000 to local nonprofits



Caroline's Thrift Shop in Aptos donated more than \$250,000 to local nonprofits. (Dan Coyro -- Santa Cruz Sentinel)

By **Ryan Masters**, *Santa Cruz Sentinel*

POSTED: 01/16/17, 5:32 PM PST | UPDATED: 3 DAYS AGO 2 COMMENTS

APTOS >> Caroline's Nonprofit Thrift Shop, a secondhand store at the corner of Trout Gulch Road and Soquel Drive in Aptos, has done it again. This year, they gave away \$275,000 to fund children's programs of 19 local nonprofits.

"That amount brings the grand total to \$1,125,000 given away since we opened in the summer of 2010," said founder Christy Licker.

Of course, Caroline's Thrift Shop is no ordinary hand-me-down joint. Its entire 80-person crew works voluntarily and their 100 percent-donated stock consists of beautiful furniture, art, clothing and jewelry.

"Some of the art we received this year was so valuable we had to send it to an auction house," Licker said. "A diamond solitaire we received was valued at \$10,000."

The community lavishes valuables on Caroline's Thrift Shop because it is so transparent about where the money goes, according to Licker. Every year, recipients are invited to a gifting ceremony at the Rio Cafe in Aptos and the exact amount of each donation is announced.

2017 CAROLINE'S THRIFT SHOP RECIPIENTS

Children's Hospice & Palliative Care Coalition: \$25,000.

Hospice of Santa Cruz: \$25,000.

Jacob's Heart: \$25,000.

SPIN: \$25,000.

Team G Cancer Foundation: \$1,500.

Hope's Closet: \$3,000.

Shared Adventures: \$4,000.

Community Bridges: \$5,000.

Kinship Center: \$5,000.

“Even though the money we donate benefits thousands of local children and families each year, it is all happening because of one person who had a tremendous impact — and that person was my daughter, Caroline,” said Licker.

Caroline Licker died in 2007 at the age of 16 from complications related to scoliosis surgery. The “fiercely resilient and joyful” girl was especially impacted by four local organizations: Children’s Hospice and Palliative Care, Hospice of Santa Cruz County, Jacob’s Heart and Special Parents Information Network.

So when Licker opened Caroline’s Thrift Shop in July 2010, three years after her daughter died, she dedicated the nonprofit business’ first \$40,000 in profits to those “Core Four” organizations that had provided so much support to her daughter.

Since then, the list of nonprofit recipients has grown to include an additional 19 organizations.

“What these organizations have in common is that all have programs and services for local kids with special need — kids with terminal or life-threatening illness or injuries; kids in foster care; kids with physical or cognitive disabilities; and hungry or poorly nourished children,” Licker said.

Caroline’s Thrift Shop also looks for organizations that are providing programs or services with a long-term pay off, such as Teen Kitchen Project where participants gain valuable cooking and volunteer experience, according to Licker.

Building Rhythms: \$5,000.

Food For Kids/Second Harvest Food Bank: \$5,000.

Youth Now: \$5,000.

Adaptive Yoga: \$6,000.

Camp Kesum: \$6,000.

For Kids Monterey Bay: \$7,000.

Easter Seals Central Calif/Respite: \$8,000.

Nourishing Generations: \$9,000.

Survivors Healing Center: \$10,000.

Big Brothers/Big Sisters Santa Cruz: \$10,000.

Walnut Avenue Women’s Center: \$10,500.

Teen Kitchen Project: \$15,000.

CASA: \$25,000.

Coastal Kids Home Care: \$25,000.

“We are also excited about the programs provided by Nourishing Generations, one of which is teaching kids who are aging out of the foster system life skills like opening a bank account, balancing their checkbook or finding a job,” Licker said.

Yet Licker said that \$275,000 may be a ceiling for Caroline’s Thrift Shop as overhead related to much-needed upgrades to the Trout Gulch Road shop could cut into profits in the coming years.

To learn more about helping Caroline’s Thrift Shop, visit [youtube.com/watch?v=KVCrcsnHeIU](https://www.youtube.com/watch?v=KVCrcsnHeIU).

Advertisement

Inauguration spurs Hands Around the Plaza event

Posted: Sunday, Jan 22nd, 2017

BY: TARMO HANNULA

WATSONVILLE — About 200 people gathered in Watsonville Plaza Thursday at sunset in a peaceful demonstration to foster community solidarity on the eve of the inauguration of President-elect Donald Trump.

"There's a lot of scared people in our community," said Ray Cancino, executive director of Community Bridges. "These people do not need to stay in a shadow. I am the child of an immigrant family. I have privileges because I am a citizen but for those who are not, it must be an odd feeling to feel not wanted."

The event included speeches from Watsonville City Councilman Felipe Hernandez, Assemblywoman Anna Caballero, Watsonville Police Chief David Honda and Doug Keegan of the Santa Cruz County Immigration Project.

The event was put on by Protect Pajaro Valley Coalition.



Tarmo Hannula/Register-Pajaronian The band Pandulce performs Thursday evening in Watsonville Plaza at the Hands Around the Plaza event, which was staged to bring community members together on the eve of the presidential inauguration. Watsonville City Councilman Felipe Hernandez said about 200 people attended.

